

# 2007 NEW MEXICO GEOGRAPHIC ACCESS DATA SYSTEM & SELECTED HEALTH PROFESSIONALS IN NEW MEXICO

PRINTED OCTOBER 2008



# NEW MEXICO

## HEALTH POLICY COMMISSION



# **The New Mexico Health Policy Commission**

## **Governor Bill Richardson**

### **Commissioners**

Frank Hesse, M.D., Chairman  
Seferino Montano, Vice-Chairman  
Dawn Brooks, MBA-HC  
Karen Kotch, P.A.  
Eric Kraska, M.D.  
Kim Maxwell  
Moises Morales  
Miles Nelson, M.D.  
Alicia Roman

### **Management**

Liz Stefanics, Ph.D., Director  
Kristine “Kooch” Jacobus, MA, Deputy Director  
TC Shaffer, MA, Program Manager  
Terry Reusser, IT Manager  
Peggy Schummers, CFO/HR Manager

### **Staff**

Carlos Beserra, Special Projects Coordinator  
Marietta Esquibel, IT Database Administrator  
Dan Garcia, MBA, Management Analyst  
Lisa Marie Gomez, Management Analyst  
Reina Guillen, Management Analyst  
Elisha Leyba-Tercero, Economist  
Pat Mente, M.S.Ed., IT Database Administrator  
Tyson Pollman, IT Database Administrator

**Staff Author: TC Shaffer**



# TABLE OF CONTENTS

EXECUTIVE SUMMARY .....	1
MEDICAL PROFESSIONALS	
The Physician Workforce .....	4
The Certified Nurse Practitioner Workforce .....	9
The Physician Assistant Workforce .....	14
NURSING PROFESSIONALS	
The Registered Nurse Workforce .....	20
The Licensed Practitioner Nurse Workforce .....	26
MENTAL HEALTH PROFESSIONALS	
The Psychiatrist Workforce .....	32
The Psychologist Workforce .....	37
DENTAL PROFESSIONALS	
The Dentist Workforce .....	44
The Dental Hygienist Workforce .....	49
The Dental Assistant Workforce .....	52
PHARMACY PROFESSIONALS	
The Pharmacist Workforce .....	56
The Licensed Pharmacist Clinician Workforce .....	60
The Licensed Pharmacist Technician Workforce .....	62
EMERGENCY MEDICAL SERVICES PROFESSIONALS	
The Emergency Medical Technician and Paramedic Workforce .....	66



## EXECUTIVE SUMMARY

Pursuant to the Health Information System Act, Section 24-14A-1, NMSA 1978, the Health Policy Commission (HPC) collects information from various licensing boards and maintains a Geographic Access Data System (GADS). The GADS database includes licensing information on healthcare facilities and health professionals. Professional data includes demographic information, educational attainment, and contact address on licensed health professionals.

While licensure data provides the ability to measure select variables of the professional health workforce over time, there are several things it does not provide. For instance, it is possible that an individual may hold an active license, but may not be engaged in active practice or may be providing services in another state. In addition, licensure data does not include how many hours a health care professional is actually employed in that specific role. Therefore, the data does not necessarily reflect full-time positions.

Although health care professionals are required to provide a practice address to their licensing board, neither the licensing board nor the HPC have verified the accuracy of the address. It is also not known if the licensed health professional used their home address, is working in multiple locations in different counties, or is working in another state.

The majority of physicians, nurse practitioners, physician assistants, psychologists, psychiatrists, dentists, pharmacists, and pharmacist clinicians have a licensing address in two of the most populated counties in the state - Bernalillo (1<sup>st</sup>) and Santa Fe (3<sup>rd</sup>).

Another highlight of this information is the ability to compare New Mexico to other states and the District of Columbia.

Health Profession	# per 100,000 NM Residents	US Ranking - Compared to Other States	# of States with Fewer Providers Than NM on a Per Capita Basis
Dentists	44.2	50	1
Registered Nurses	579	49	2
Pharmacists*	67.6	45	5
Licensed Practical Nurses**	145.4	42	9
Nurse Practitioners*	34.2	37	14
Physicians	279.0	31	20
Physician Assistants	25.7	23	28
Psychiatrists*	5.8	23	28
Psychologists*	41.2	12	39

\*Based on 2004 data

\*\*Based on 2000 data



# **MEDICAL PROFESSIONALS**



## THE PHYSICIAN WORKFORCE

According to a 2006 study by the Health Resources and Services Administration (HRSA), approximately 24,000 physicians complete graduate medical education (GME) each year. To complete GME, a student must earn a four-year college degree and complete four years of medical education before entering residencies and/or fellowships which last up to four years. Most are graduates of allopathic medicine, which annually graduates approximately 15,000 to 16,000 Doctors of Medicine (MD). This number has been relatively constant since 1980 and is projected to remain unchanged through 2020.

The HRSA also determined that approximately 3,000 students per year receive Doctor of Osteopathic Medicine (DO) degrees from schools of osteopathic medicine. It has been projected that the number of DO graduates will increase to 4,000 over the next ten years. An additional 5,000 students are accepted in the required residency and/or fellowship program after completing medical schools located outside of the United States.<sup>1</sup>

The council on Graduate Medical Education has predicted a shortage of approximately 85,000 physicians by 2020. This projected shortage is partly due to the aging population in the United States. Not only do elderly people require much higher levels of medical services, but many of our physicians that were trained in the 1970's and 1980's will be retiring. Approximately 250,000 currently active physicians are over the age of 55 years.<sup>2</sup>

While the debate continues over the adequacy of the current and future supply of physician's in the United States, there is little debate over the negative impact on the lack of access to care for those living in rural communities. It is very unlikely that this situation will improve in the near future. Only 3% of recent medical school graduates plan to practice in small towns or rural areas. Contributing factors to this situation include the increasing level of medical student debt, the changing lifestyle preferences of younger physicians, and the decreasing number of physicians entering family medicine and primary care.<sup>3</sup> In the report *Physician Supply in New Mexico 2006*, the Health Policy Commission reported that ". . . 62% of the active patient care physicians in New Mexico in 2006 were age 50 or over."<sup>4</sup>

Figure 1 presents the field of specialty for nonfederal primary care physicians in the United States and New Mexico. Seven percent fewer primary care physicians in New Mexico specialize in internal medicine than the national average. Conversely, Family Practice accounts for 10% more in New Mexico than the average of the United States.

1 Health Resources and Service Administration. (October 2006). *Physician Supply and Demand: Projections to 2020*. 2-7

2 Cross M (June 2007). *What the Primary Care Physician Shortage Means for Health Plans*. Retrieved October 17, 2008 from <http://www.managedcaremag.com/archives/0706/0706.shortage.html>

3 RabinowitzHK, Diamond JJ, Markham FW, Wortman JR. (2008). *Medical School Programs to Increase the Rural Physician Supply*. *Academic Medicine*. 83: 235-43.

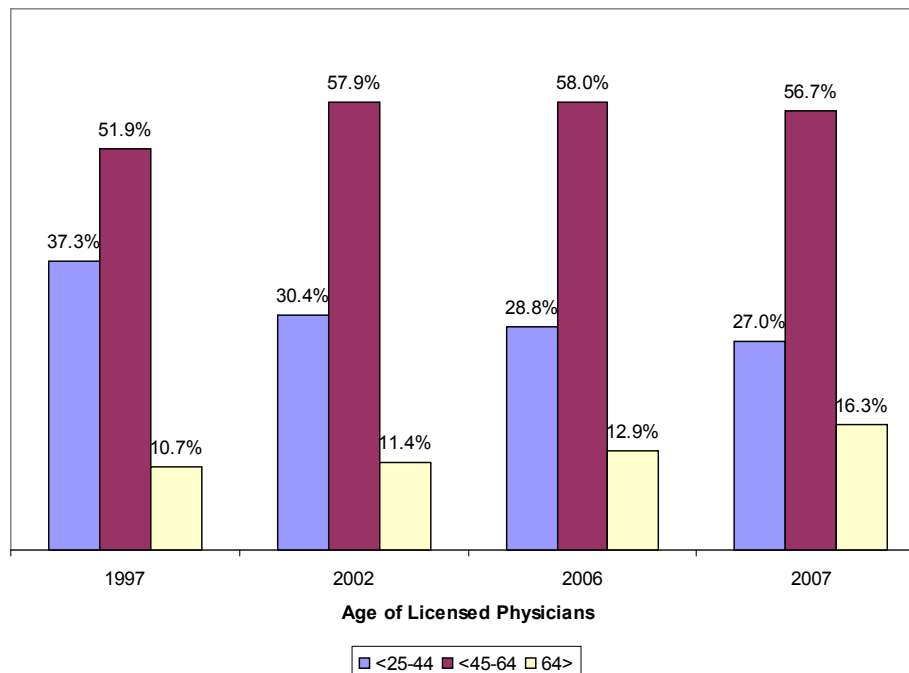
4 New Mexico Health Policy Commission (December 2007). *Physician Supply in NM 2006*. 20

**Figure 1. Nonfederal Primary Care Physicians in New Mexico and the United States by Specialty - 2007<sup>1</sup>**

Specialty	New Mexico		United States	
	Number	Percentage	Number	Percentage
Internal Medicine	651	29%	134,703	36%
Family Practice	861	38%	107,907	28%
Pediatrics	371	16%	67,457	18%
Obstetrics/Gynecology	254	11%	46,743	12%
General Practice	121	5%	22,983	6%
<b>TOTAL</b>	<b>2,258</b>	<b>100%</b>	<b>379,793</b>	<b>100%</b>

The continuing trend of the aging of our physician workforce is displayed in Figure 2. Those physicians under the age of 45 years continue to decrease as a percentage of all New Mexico physicians. By contrast, those New Mexico physicians over the age of 64 years continue to become a larger percentage of all physicians licensed in the State. In 2007, 16.3% were in this category.

**Figure 2. Licensed Physicians In New Mexico by Age 1997, 2002, 2006, and 2007<sup>2</sup>**



1 Kaiser Family Foundation, State Health Facts. (nd) *Number of Nonfederal Physicians by Specialty 2007*. Retrieved October 15, 2008 from <http://www.statehealthfacts.org/comparebar.jsp?ind=433&cat=8>

2 Health Policy Commission, December 2007. *2006 New Mexico Geographic Access Data System & Selected Health Professionals in New Mexico*. 33

## 2007 GADS

Figure 3 presents the number of licensed physicians and the rate of physicians per 100,000 residents in each state. The highest rate is the District of Columbia where there are 825 physicians for every 100,000 residents. In contrast, Idaho and Mississippi each have 207 physicians for every 100,000 residents. According to the Kaiser Family Foundation, *State Health Facts 2007*, New Mexico is ranked 31<sup>st</sup>, and the number of physicians is reported at 5,495.<sup>1</sup>

**Figure 3. Ranked by Estimated Number of Physicians Per 100,000 Residents by State - 2007<sup>2 3</sup>**

Rank	Location	# of Physicians	Population	# of Physicians Per 100,000 Residents	Rank	Location	# of Physicians	Population	# of Physicians Per 100,000 Residents
1	District of Columbia	4,854	588,292	825	26	Tennessee	18,255	6,156,719	297
2	Massachusetts	33,409	6,449,755	518	27	Louisiana	12,660	4,293,204	295
3	New York	87,030	19,297,729	451	28	West Virginia	5,295	1,812,035	292
4	Vermont	2,778	621,254	447	29	North Carolina	25,968	9,061,032	287
5	Maryland	25,037	5,618,344	446	30	Nebraska	5,044	1,774,571	284
6	Rhode Island	4,531	1,057,832	428	<b>31</b>	<b>New Mexico</b>	<b>5,495</b>	<b>1,969,915</b>	<b>279</b>
7	Connecticut	14,930	3,502,309	426	32	North Dakota	1,782	639,715	279
8	Pennsylvania	48,633	12,432,792	391	33	Kansas	7,665	2,775,997	276
9	New Jersey	33,242	8,685,920	383	34	Montana	2,631	957,861	275
10	Maine	4,858	1,317,207	369	35	Arizona	16,883	6,338,755	266
11	Hawaii	4,586	1,283,388	357	36	Kentucky	11,225	4,241,474	265
12	Michigan	33,627	10,071,822	334	37	South Carolina	11,599	4,407,709	263
13	Ohio	38,239	11,466,917	333	38	Iowa	7,641	2,988,046	256
14	Minnesota	17,295	5,197,621	333	39	Indiana	16,122	6,345,289	254
15	Oregon	12,305	3,747,455	328	40	South Dakota	2,015	796,214	253
16	New Hampshire	4,304	1,315,828	327	41	Alaska	1,694	683,478	248
17	Illinois	41,826	12,852,548	325	42	Alabama	11,352	4,627,851	245
	<b>UNITED STATES</b>	<b>973,524</b>	<b>301,621,157</b>	<b>323</b>	43	Texas	58,223	23,904,380	244
18	Washington	20,383	6,468,424	315	44	Utah	6,399	2,645,330	242
19	Florida	57,400	18,251,243	314	45	Georgia	23,037	9,544,750	241
20	California	113,624	36,553,215	311	46	Oklahoma	8,629	3,617,316	239
21	Colorado	15,080	4,861,515	310	47	Arkansas	6,597	2,834,797	233
22	Delaware	2,671	864,764	309	48	Wyoming	1,193	522,830	228
23	Virginia	23,676	7,712,091	307	49	Nevada	5,851	2,565,382	228
24	Wisconsin	16,979	5,601,640	303	50	Mississippi	6,053	2,918,785	207
25	Missouri	17,762	5,878,415	302	51	Idaho	3,106	1,499,402	207

1 Kaiser Family Foundation, State Health Facts. (nd) *Number of Nonfederal Physicians 2007*. Retrieved October 15, 2008 from <http://www.statehealthfacts.org/comparablemaptable.jsp?ind=429&cat=8>

2 U.S. Census Bureau. (July 1, 2007.). *2007 Population Estimates*. Retrieved October 3, 2008 from [http://factfinder.census.gov/servlet/GCTTable?\\_bm=y&-geo\\_id=01000US&-\\_box\\_head\\_nbr=GCT-T1&-ds\\_name=PEP\\_2007\\_EST&-\\_lang=en&-redoLog=false&-mt\\_name=PEP\\_2007\\_EST\\_GCTT1\\_ST2&-format=US-9&-\\_sse=on](http://factfinder.census.gov/servlet/GCTTable?_bm=y&-geo_id=01000US&-_box_head_nbr=GCT-T1&-ds_name=PEP_2007_EST&-_lang=en&-redoLog=false&-mt_name=PEP_2007_EST_GCTT1_ST2&-format=US-9&-_sse=on)

3 Kaiser Family Foundation, State Health Facts. (nd) *Number of Nonfederal Physicians 2007*. Retrieved October 15, 2008 from <http://www.statehealthfacts.org/comparablemaptable.jsp?ind=429&cat=8>

## Licensed Physicians in New Mexico by County

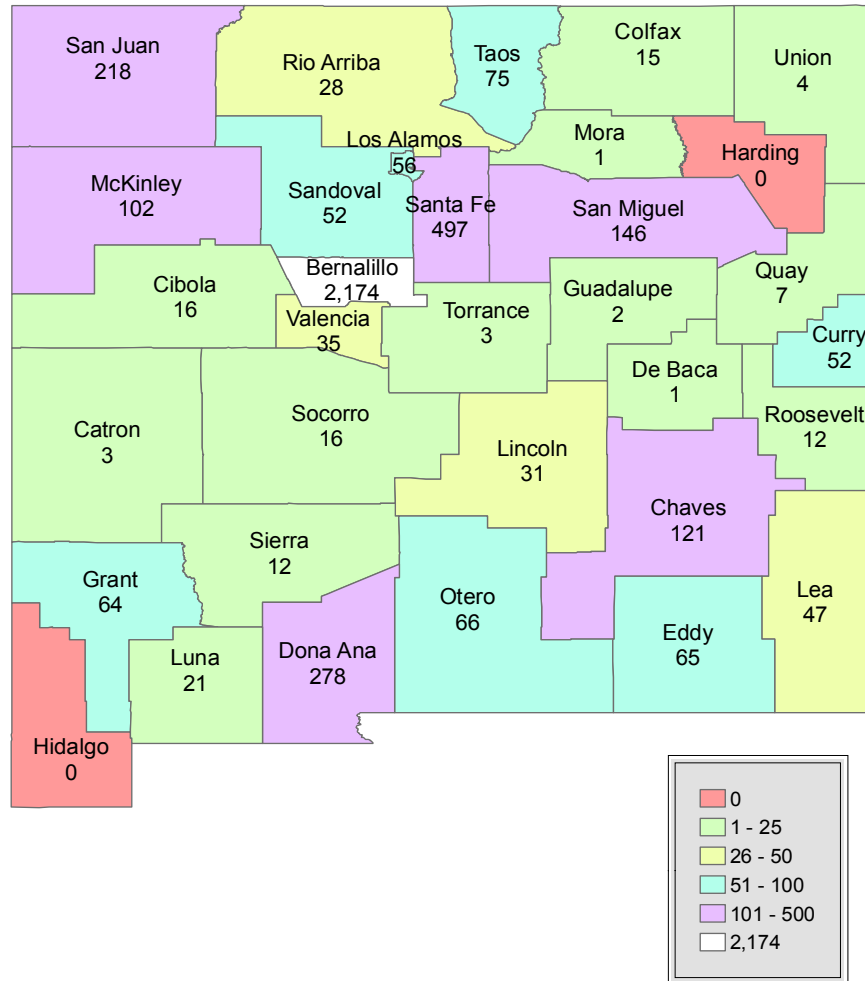
Bernalillo, Santa Fe, and Los Alamos counties all have more than three licensed physicians per 1,000 residents. As shown in Figure 4, 17 counties have less than one licensed physician for every 1,000 residents. In New Mexico, the number of physicians rose from 3,858 in 2006, to 4,165 in 2007. The rate of physicians per 1,000 residents increased from 1.92 in 2006 to 2.14 in 2007.

**Figure 4. New Mexico Licensed Physicians by County - 2007<sup>1</sup>**

County	Population	Percent of Population	Licensed Physicians	% Total Physicians	Rate Per 1,000 Population
Bernalillo	629,292	31.9%	2,174	51.5%	3.45
Catron	3,431	0.2%	3	0.1%	0.87
Chaves	62,595	3.2%	121	2.9%	1.93
Cibola	27,261	1.4%	16	0.4%	0.59
Colfax	13,216	0.7%	15	0.4%	1.13
Curry	45,328	2.3%	52	1.2%	1.15
De Baca	1,916	0.1%	1	0.0%	0.52
Dona Ana	198,791	10.1%	278	6.6%	1.40
Eddy	51,002	2.6%	65	1.5%	1.27
Grant	29,699	1.5%	64	1.5%	2.15
Guadalupe	4,447	0.2%	2	0.0%	0.45
Harding	716	0.0%	0	0.0%	0.00
Hidalgo	4,945	0.3%	0	0.0%	0.00
Lea	58,043	2.9%	47	1.1%	0.81
Lincoln	20,783	1.1%	31	0.7%	1.49
Los Alamos	18,558	0.9%	56	1.3%	3.02
Luna	26,996	1.4%	21	0.5%	0.78
McKinley	70,059	3.6%	102	2.4%	1.46
Mora	5,069	0.3%	1	0.0%	0.20
Otero	63,129	3.2%	66	1.6%	1.05
Quay	8,971	0.5%	7	0.2%	0.78
Rio Arriba	40,827	2.1%	28	0.7%	0.69
Roosevelt	19,142	1.0%	12	0.3%	0.63
Sandoval	117,866	6.0%	52	5.2%	1.85
San Juan	122,427	6.2%	218	3.5%	1.19
San Miguel	28,655	1.5%	146	1.2%	1.81
Santa Fe	142,955	7.3%	497	11.8%	3.48
Sierra	12,316	0.6%	12	0.3%	0.97
Socorro	18,118	0.9%	16	0.4%	0.88
Taos	31,608	1.6%	75	1.8%	2.37
Torrance	16,598	0.8%	3	0.1%	0.18
Union	3,792	0.2%	4	0.1%	1.05
Valencia	71,364	3.6%	35	0.8%	0.49
<b>Total</b>	<b>1,969,915</b>	<b>100%</b>	<b>4,220</b>	<b>100.0%</b>	<b>2.14</b>

<sup>1</sup> New Mexico Medical Board (September 2008). *Internal Data Run.*

## Map 1. Distribution of New Mexico Licensed Physicians by County - 2007<sup>1</sup>



\*Number represents licensed physicians in each county. Licensed physicians may not currently be practicing, or may be practicing in another county.

<sup>1</sup> New Mexico Medical Board (September 2008). *Internal Data Run.*

## THE CERTIFIED NURSE PRACTITIONER WORKFORCE

Nurse practitioners (NPs) are registered nurses who are prepared, through advanced education and clinical training, to provide a wide range of preventive and acute health care services to individuals of all ages. NPs take health histories and provide complete physical examinations; diagnose and treat many common acute and chronic problems; interpret laboratory results and X-rays; prescribe and manage medications and other therapies; provide health teaching and supportive counseling with an emphasis on prevention of illness and health maintenance; and refer patients to other health professionals as needed.<sup>1</sup>

NPs are authorized to practice across the nation and have prescriptive privileges, of varying degrees, in 49 states. According to the most recent Health Resources and Services Administration Sample Survey reports (2004), there were 141,209 Nurse Practitioners in the United States, an increase of more than 27% over 2000 data. The actual number of nurse practitioners in 2006 was estimated to be at least 145,000.<sup>2</sup>

To become a nurse practitioner requires at least a master's degree. Most programs include about 2 years of full-time study and require a Bachelor of Science in Nursing (BSN) degree for entry; some programs require at least 1 to 2 years of clinical experience as an Registered Nurse (RN) for admission. In 2006, there were 342 master's and post-master's programs offered for nurse practitioners.<sup>3</sup>

All nursing education programs include classroom instruction and supervised clinical experience in hospitals and other health care facilities. Supervised clinical experience is provided in hospital departments such as pediatrics, psychiatry, maternity, and surgery. A growing number of programs include clinical experience in nursing care facilities, public health departments, home health agencies, and ambulatory clinics.<sup>4</sup>

Certified Nurse Practitioner programs in New Mexico are offered at New Mexico State University (NMSU) and at the University of New Mexico (UNM). NMSU offers a Master of Nursing with a specialization of Psychiatric/Mental Health Nurse Practitioner. The Master of Science in Nursing at the University of New Mexico includes specialties in Acute Care Nurse Practitioner, Family Nurse Practitioner, and Pediatric Nurse Practitioner.<sup>5</sup>

Figure 5 presents the estimated number of practicing NPs in the United States and the rate of NPs per 100,000 residents in each state. The highest rate is the District of Columbia where there are over 142 NPs for every 100,000 residents. The lowest rate is Indiana which has 2.4 NPs for every 100,000 residents. According to the New York Center for Health Workforce Studies, *United States Health Workforce Profile, 2006*,

1 American College of Nurse Practitioners (nd). *What is a Nurse Practitioner?* Retrieved October 15, 2008 from <http://www.acnpweb.org/i4a/pages/index.cfm?pageid=3479>

2 Ibid

3 Bureau of Labor Statistics (nd), *Occupational Outlook Handbook, 2008-2009 Edition, Nurses*. Retrieved October 12, 2008 from <http://www.bls.gov/oco/ocos083.htm>

4 Ibid

5 Masters in Nursing (nd). *Guide to Master's in Nursing Degrees*. Retrieved October 23, 2008 from <http://www.mastersinnursing.com/?gclid=CIDn74XN3JYCFQNKxwod9H0JuQ>

New Mexico is ranked 37<sup>th</sup> and the number of NPs in the State is 646.<sup>1</sup>

**Figure 5. Ranked by Estimated Number of Nurse Practitioners (NPs) Per 100,000 Residents by State – 2004\*2 3**

Rank	Location	# of NPs	Population	# of NPs Per 100,000 Residents	Rank	Location	# of NPs	Population	# of NPs Per 100,000 Residents
1	District of Columbia	826	579,621	142.54	27	North Dakota	271	636,814	42.56
2	Alaska	858	661,661	129.68		<b>UNITED STATES</b>	<b>49,908</b>	<b>118,714,591</b>	<b>42.04</b>
3	Washington	6,575	6,189,869	106.23	28	Utah	987	2,430,841	40.6
4	New Hampshire	1,290	1,294,285	99.65	29	Montana	369	926,721	39.81
5	Delaware	807	827,671	97.55	30	New Jersey	3,378	8,641,235	39.09
6	Massachusetts	5,785	6,433,676	89.92	31	Tennessee	2,305	5,912,063	38.98
7	Vermont	486	618,794	78.53	32	Kentucky	1,541	4,139,859	37.22
8	Connecticut	2,569	3,481,890	73.78	33	Wisconsin	2,000	5,510,199	36.3
9	Maine	898	1,308,892	68.63	34	Georgia	3,196	8,921,371	35.82
10	Virginia	4,840	7,464,033	64.85	35	West Virginia	631	1,804,618	34.98
11	New York	11,719	19,258,479	60.85	36	California	12,481	35,721,991	34.94
12	Florida	10,069	17,342,623	58.06	<b>37</b>	<b>New Mexico</b>	<b>646</b>	<b>1,892,182</b>	<b>34.15</b>
13	Mississippi	1,671	2,886,860	57.87	38	Minnesota	1,657	5,085,626	32.58
14	Wyoming	283	503,258	56.27	39	Hawaii	397	1,254,172	31.67
15	Oregon	1,963	3,583,027	54.78	40	Nebraska	546	1,743,954	31.31
16	Idaho	746	1,391,751	53.62	41	South Carolina	1,201	4,201,437	28.58
17	Arkansas	1,437	2,742,898	52.39	42	North Carolina	2,299	8,538,378	26.93
18	Colorado	2,323	4,609,264	50.4	43	Michigan	2,597	10,102,720	25.71
19	Iowa	1,457	2,946,009	49.45	44	Louisiana	1,152	4,487,966	25.67
20	Pennsylvania	5,941	12,348,618	48.11	45	Ohio	2,849	11,452,808	24.88
21	Missouri	2,754	5,744,753	47.94	46	Texas	5,524	22,454,811	24.6
22	Maryland	2,541	5,537,662	45.88	47	Alabama	995	4,508,540	22.07
23	Arizona	2,627	5,744,367	45.74	48	Illinois	2,514	12,680,053	19.83
24	Kansas	1,249	2,730,828	45.73	49	Nevada	434	2,329,960	18.63
25	Rhode Island	490	1,072,859	45.71	50	Oklahoma	647	3,516,552	18.39
26	South Dakota	330	774,129	42.68	51	Indiana	149	6,218,863	2.4

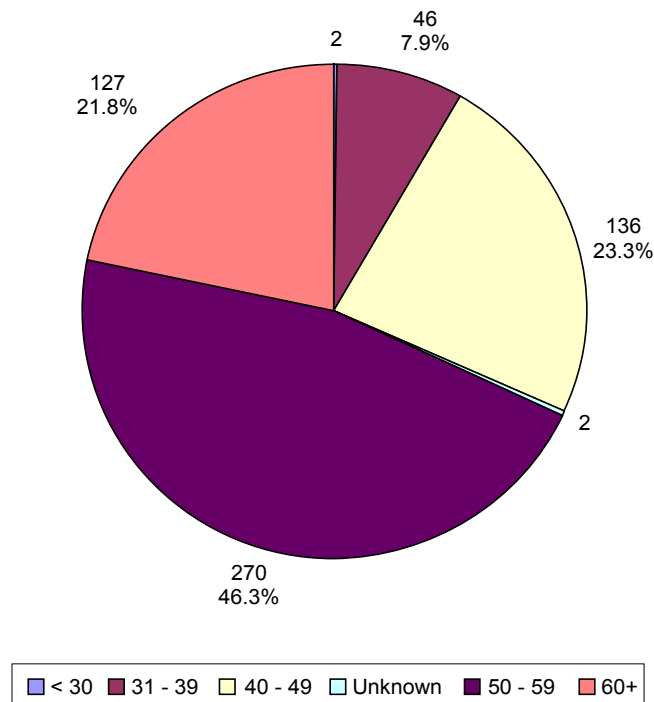
\*2004 is the most recent national data available on the number of nurse practitioners by state.

1 The New York Center for Health Workforce Studies (October 2006). *The United States Health Workforce Profile*. 124  
 2 U.S. Census Bureau. (July 1, 2007.). *2007 Population Estimates*. Retrieved October 3, 2008 from [http://factfinder.census.gov/servlet/GCTTable?\\_bm=y&-geo\\_id=01000US&-\\_box\\_head\\_nbr=GCT-T1&-ds\\_name=PEP\\_2007\\_EST&-\\_lang=en&-redoLog=false&-mt\\_name=PEP\\_2007\\_EST\\_GCTT1\\_ST2&-format=US-9&-\\_sse=on](http://factfinder.census.gov/servlet/GCTTable?_bm=y&-geo_id=01000US&-_box_head_nbr=GCT-T1&-ds_name=PEP_2007_EST&-_lang=en&-redoLog=false&-mt_name=PEP_2007_EST_GCTT1_ST2&-format=US-9&-_sse=on)  
 3 The New York Center for Health Workforce Studies. (October 2006). *The United States Health Workforce Profile*. 124

## The Certified Nurse Practitioner Workforce in New Mexico

Of the 583 certified nurse practitioners licensed in New Mexico in 2007, 46.3% were between 50 and 59 years of age, 23.3% were between 40 and 49 years of age, 21.8% were over the age of 60 years, and 7.9% were 31 to 39 years of age. Slightly over 68% of the certified nurse practitioners are 50 years of age or older.

**Figure 6. Licensed Nurse Practitioners In New Mexico by Age 2007<sup>1</sup>**



<sup>1</sup> New Mexico Board of Nursing (September 2008). *Internal Data Run*.

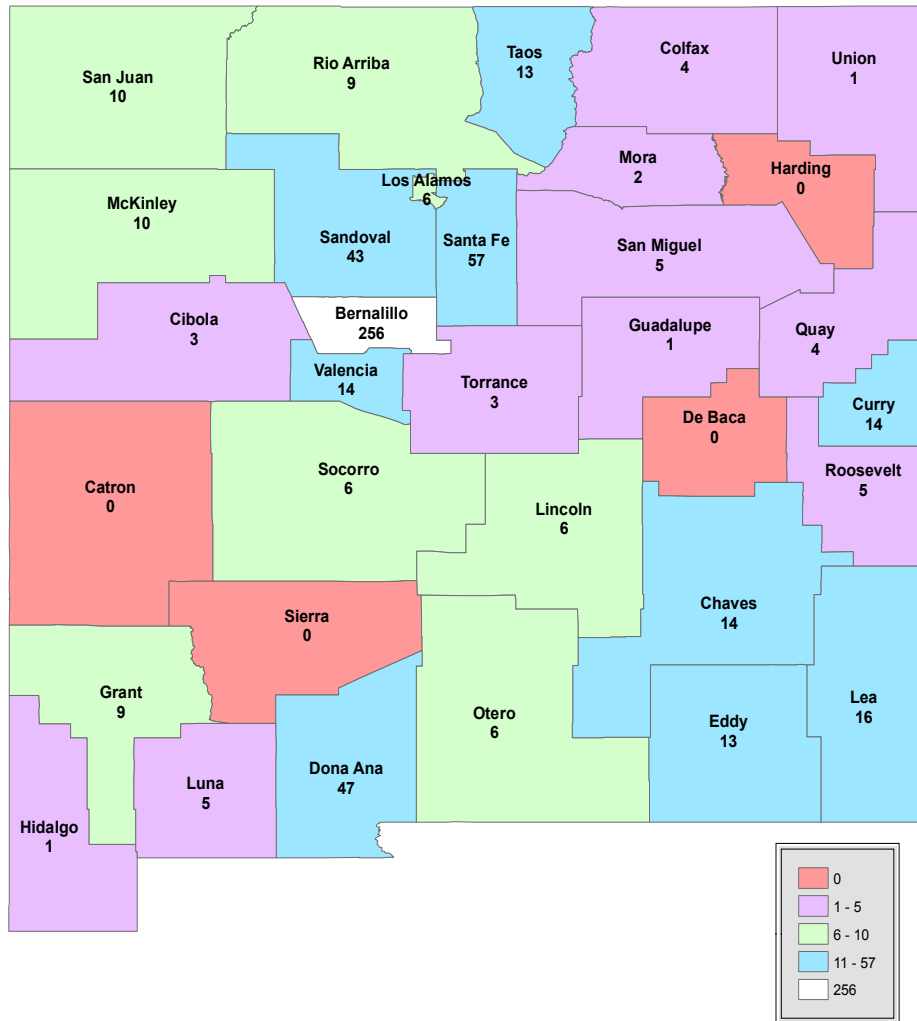
Bernalillo, Santa Fe, Quay, and Taos counties all have more than .40 licensed nurse practitioners per 1,000 residents. Catron, Sierra, De Baca and Harding Counties have none.

**Figure 7. New Mexico Licensed Nurse Practitioners  
by County - 2007<sup>1</sup>**

County	Population	Percent of Population	Certified Nurse Practitioners	% Total Nurse Practitioners	Rate Per 1,000 Population
Bernalillo	629,292	31.9%	256	43.9%	0.41
Catron	3,431	0.2%	0	0.0%	0.00
Chaves	62,595	3.2%	14	2.4%	0.22
Cibola	27,261	1.4%	3	0.5%	0.11
Colfax	13,216	0.7%	4	0.7%	0.30
Curry	45,328	2.3%	14	2.4%	0.31
De Baca	1,916	0.1%	0	0.0%	0.00
Dona Ana	198,791	10.1%	47	8.1%	0.24
Eddy	51,002	2.6%	13	2.2%	0.25
Grant	29,699	1.5%	9	1.5%	0.30
Guadalupe	4,447	0.2%	1	0.2%	0.22
Harding	716	0.0%	0	0.0%	0.00
Hidalgo	4,945	0.3%	1	0.2%	0.20
Lea	58,043	2.9%	16	2.7%	0.28
Lincoln	20,783	1.1%	6	1.0%	0.29
Los Alamos	18,558	0.9%	6	1.0%	0.32
Luna	26,996	1.4%	5	0.9%	0.19
McKinley	70,059	3.6%	10	1.7%	0.14
Mora	5,069	0.3%	2	0.3%	0.39
Otero	63,129	3.2%	6	1.0%	0.10
Quay	8,971	0.5%	4	0.7%	0.45
Rio Arriba	40,827	2.1%	9	1.5%	0.22
Roosevelt	19,142	1.0%	5	0.9%	0.26
Sandoval	117,866	6.0%	43	7.4%	0.36
San Juan	122,427	6.2%	10	1.7%	0.08
San Miguel	28,655	1.5%	5	0.9%	0.17
Santa Fe	142,955	7.3%	57	9.8%	0.40
Sierra	12,316	0.6%	0	0.0%	0.00
Socorro	18,118	0.9%	6	1.0%	0.33
Taos	31,608	1.6%	13	2.2%	0.41
Torrance	16,598	0.8%	3	0.5%	0.18
Union	3,792	0.2%	1	0.2%	0.26
Valencia	71,364	3.6%	14	2.4%	0.20
<b>Total</b>	<b>1,969,915</b>	<b>100%</b>	<b>583</b>	<b>100%</b>	<b>0.30</b>

<sup>1</sup> New Mexico Board of Nursing (September 2008). *Internal Data Run.*

## Map 2. Distribution of New Mexico Certified Nurse Practitioners by County - 2007<sup>1</sup>



\*Number represents licensed nurse practitioners in each county. Licensed nurse practitioners may not currently be practicing, or may be practicing in another county.

<sup>1</sup> New Mexico Board of Nursing (September 2008). *Internal Data Run*.

## THE PHYSICIAN ASSISTANT WORKFORCE

Physician assistants (PA) held about 68,000 jobs in 2007. The number of jobs is greater than the number of practicing PAs because some hold two or more jobs. For example, some PAs work with a supervising physician, but also work in another practice, clinic, or hospital. More than half of jobs for PAs were in the offices of physicians. About a quarter were in public or private hospitals. The rest were mostly in outpatient care centers, including health maintenance organizations, the Federal Government, and public or private colleges, universities, and professional schools. A few were self-employed.<sup>1</sup>

Physician assistants practice medicine under the supervision of physicians. PAs are formally trained to provide diagnostic, therapeutic, and preventive health care services, as delegated by a physician. Working as members of the health care team, they take medical histories, examine and treat patients, order and interpret laboratory tests and x rays, and make diagnoses. They also treat minor injuries, by suturing, splinting, and casting. PAs record progress notes, instruct and counsel patients, and order or carry out therapy. In 48 States and the District of Columbia, physician assistants may prescribe some medications.<sup>2</sup>

Physician assistant programs usually last at least 2 years. Admission requirements vary by program, but many require at least 2 years of college and some health care experience. All states require that PAs complete an accredited, formal education program and pass a National exam to obtain a license.

In 2007, 136 education programs for physician assistants were accredited or provisionally accredited by the American Academy of Physician Assistants. More than 90 of these programs offered the option of a master's degree, and the rest offered either a bachelor's degree or an associate degree. Most applicants to PA educational programs already have a bachelor's degree.<sup>3</sup>

Figure 8 presents the number of practicing physicians' assistants in the United States and the rate of physicians' assistants per 100,000 residents in each state. The highest rate is Alaska where there are 51.6 physicians' assistants for every 100,000 residents. The lowest rate is Mississippi which had 2.7 physician's assistants for every 100,000 residents. According to the Kaiser Family Foundation, *State Health Facts 2007*, New Mexico is ranked 23<sup>rd</sup> and the number of physicians' assistants in the State is 506.<sup>4</sup>

---

1 Bureau of Labor Statistics (nd), *Occupational Outlook Handbook, 2008-2009 Edition, Physician Assistants*. Retrieved October 12, 2008 from <http://www.bls.gov/oco/ocos081.htm>.

2 Ibid

3 Colby College. (nd) *Physician Assistants*. Retrieved October 22, 2008 from <http://www.colby.edu/health.serv/pa.htm>

4 Kaiser Family Foundation, *State Health Facts*. (nd) *Projected Number of Physician Assistants in Clinical Practice, as of January 1, 2008*. Retrieved October 18, 2008 from <http://www.statehealthfacts.org/comparetable.jsp?ind=440&cat=8&sub=103&yr=63&typ=1&sort=a&o>

**Figure 8. Ranked by Number of Physician Assistants Per 100,000 Residents by State - 2007<sup>1 2</sup>**

Rank	Location	# of Physicians' Assistants	Population	# of Physicians' Assistants Per 100,000 Residents	Rank	Location	# of Physicians' Assistants	Population	# of Physicians' Assistants Per 100,000 Residents
1	Alaska	353	683,478	51.6	27	Massachusetts	1,558	6,449,755	24.2
2	South Dakota	371	796,214	46.6	28	Utah	631	2,645,330	23.9
3	Maine	561	1,317,207	42.6	29	Delaware	206	864,764	23.8
4	West Virginia	701	1,812,035	38.7	30	Georgia	2,242	9,544,750	23.5
5	New York	7,359	19,297,729	38.1		<b>UNITED STATES</b>	<b>68,094*</b>	<b>301,621,157</b>	<b>22.6</b>
6	Nebraska	675	1,774,571	38	31	Florida	4,090	18,251,243	22.4
7	Connecticut	1,269	3,502,309	36.2	32	Rhode Island	229	1,057,832	21.6
8	North Carolina	3,282	9,061,032	36.2	33	Minnesota	1,113	5,197,621	21.4
9	Montana	339	957,861	35.4	34	Oregon	740	3,747,455	19.7
10	North Dakota	225	639,715	35.2	35	Virginia	1,492	7,712,091	19.3
11	Vermont	212	621,254	34.1	36	Kentucky	770	4,241,474	18.2
12	Colorado	1,625	4,861,515	33.4	37	Texas	4,259	23,904,380	17.8
13	Wyoming	173	522,830	33.1	38	California	6,414	36,553,215	17.5
14	Maryland	1,829	5,618,344	32.6	39	Nevada	446	2,565,382	17.4
15	Pennsylvania	4,023	12,432,792	32.4	40	Ohio	1,852	11,466,917	16.2
16	District of Columbia	187	588,292	31.8	41	South Carolina	674	4,407,709	15.3
17	Idaho	475	1,499,402	31.7	42	New Jersey	1,304	8,685,920	15
18	New Hampshire	373	1,315,828	28.3	43	Tennessee	885	6,156,719	14.4
19	Michigan	2,837	10,071,822	28.2	44	Illinois	1,810	12,852,548	14.1
20	Washington	1,800	6,468,424	27.8	45	Hawaii	164	1,283,388	12.8
21	Oklahoma	965	3,617,316	26.7	46	Louisiana	468	4,293,204	10.9
22	Kansas	739	2,775,997	26.6	47	Missouri	557	5,878,415	9.5
23	<b>New Mexico</b>	<b>506</b>	<b>1,969,915</b>	<b>25.7</b>	48	Alabama	433	4,627,851	9.4
24	Wisconsin	1,432	5,601,640	25.6	49	Indiana	593	6,345,289	9.3
25	Arizona	1,595	6,338,755	25.2	50	Arkansas	121	2,834,797	4.3
26	Iowa	729	2,988,046	24.4	51	Mississippi	79	2,918,785	2.7

\*The total number of PAs in clinical practice includes the sum of the practicing PAs in each state (67,765) plus another 329 PAs who work or reside outside of the U.S., or whose locations are unknown.

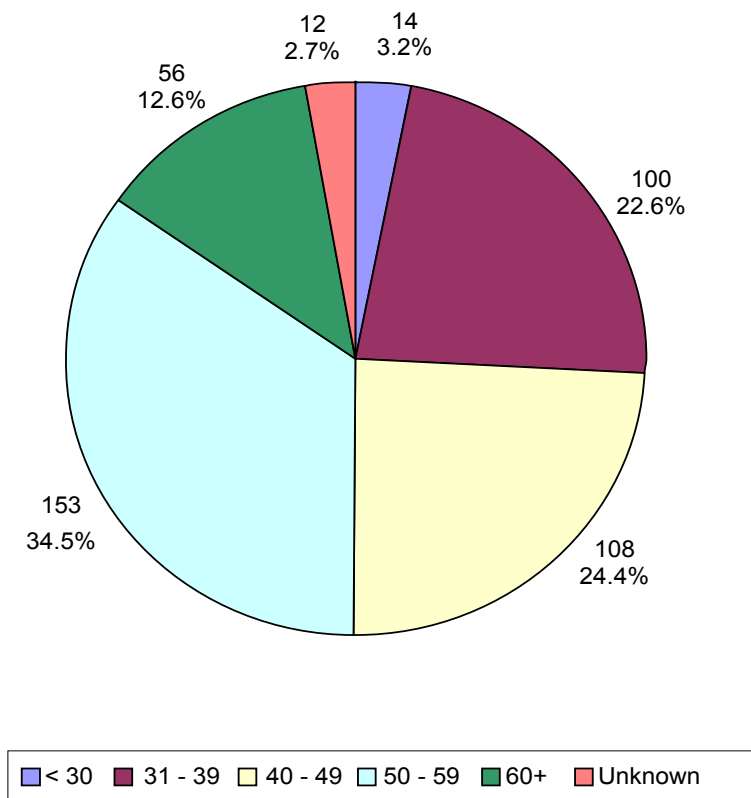
1 U.S. Census Bureau. (July 1, 2007.). *2007 Population Estimates*. Retrieved October 3, 2008 from [http://factfinder.census.gov/servlet/GCTTable?\\_bm=y&-geo\\_id=01000US&-\\_box\\_head\\_nbr=GCT-T1&-ds\\_name=PEP\\_2007\\_EST&-\\_lang=en&-redoLog=false&-mt\\_name=PEP\\_2007\\_EST\\_GCTT1\\_ST2&-format=US-9&-\\_sse=on](http://factfinder.census.gov/servlet/GCTTable?_bm=y&-geo_id=01000US&-_box_head_nbr=GCT-T1&-ds_name=PEP_2007_EST&-_lang=en&-redoLog=false&-mt_name=PEP_2007_EST_GCTT1_ST2&-format=US-9&-_sse=on)

2 Kaiser Family Foundation, State Health Facts. (nd) *Projected Number of Physician Assistants in Clinical Practice, as of January 1, 2008*. Retrieved October 18, 2008 from <http://www.statehealthfacts.org/comparetable.jsp?ind=440&cat=8&sub=103&yr=63&typ=1&sort=a&o>

## The Licensed Physicians' Assistant Workforce in New Mexico

Of the 443 licensed physicians' assistants in New Mexico in 2007 as shown in Figure 9, 34.5% were between 50 and 59 years of age, 24.4% were between 40 and 49 years of age, 12.6% were over the age of 60 years, and 22.6% were 31 to 39 years of age. Slightly over 47% of the physicians' assistants are 50 years of age or older.

**Figure 9. Licensed Physicians' Assistants In New Mexico by Age 2007<sup>1</sup>**



<sup>1</sup> New Mexico Medical Board (September 2008). *Internal Data Run*.

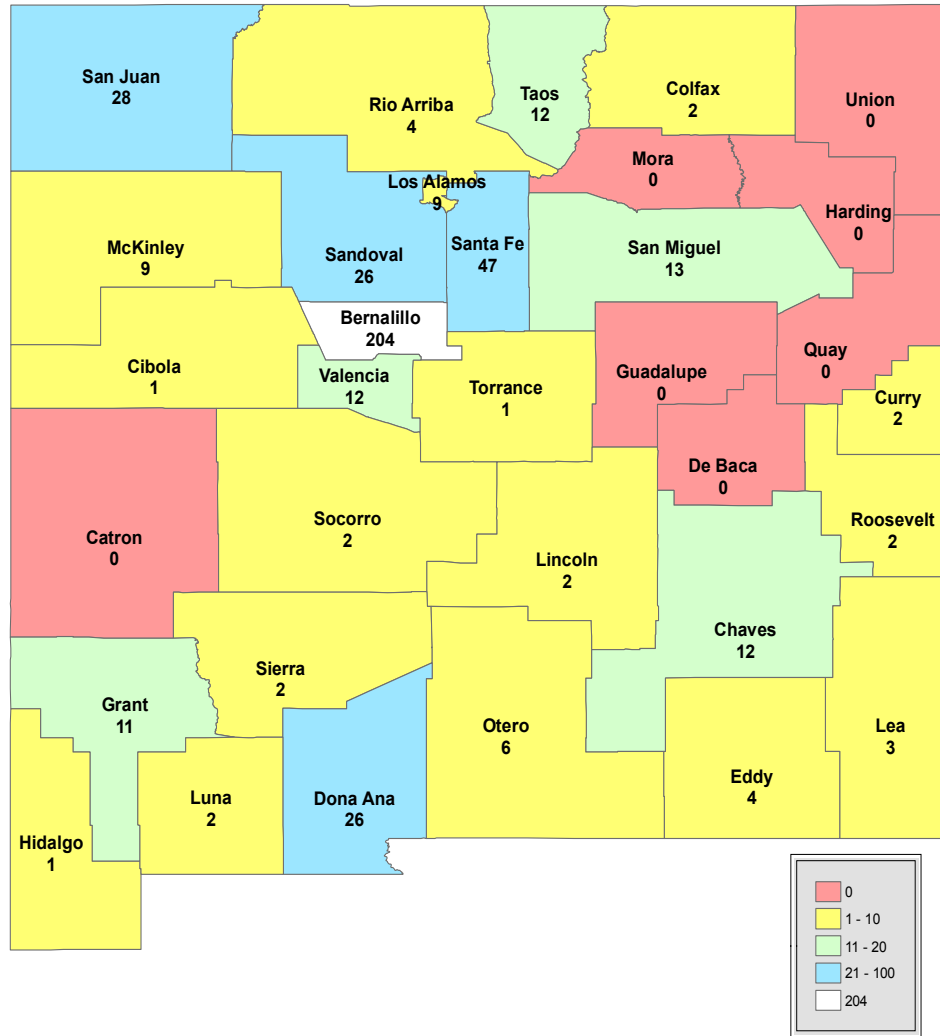
Figure 10 demonstrates that San Miguel county has the highest number of physicians' assistants per 1,000 residents. Six counties have no physician assistants.

**Figure 10. New Mexico Licensed Physicians' Assistants  
by County - 2007<sup>1</sup>**

County	Population	Percent of Population	Licensed Physicians' Assistants	% Total Physicians' Assistants	Rate Per 1,000 Population
Bernalillo	629,292	31.9%	204	46.0%	0.32
Catron	3,431	0.2%	0	0.0%	0.00
Chaves	62,595	3.2%	12	2.7%	0.19
Cibola	27,261	1.4%	1	0.2%	0.04
Colfax	13,216	0.7%	2	0.5%	0.15
Curry	45,328	2.3%	2	0.5%	0.04
De Baca	1,916	0.1%	0	0.0%	0.00
Dona Ana	198,791	10.1%	26	5.9%	0.13
Eddy	51,002	2.6%	4	0.9%	0.08
Grant	29,699	1.5%	11	2.5%	0.37
Guadalupe	4,447	0.2%	0	0.0%	0.00
Harding	716	0.0%	0	0.0%	0.00
Hidalgo	4,945	0.3%	1	0.2%	0.20
Lea	58,043	2.9%	3	0.7%	0.05
Lincoln	20,783	1.1%	2	0.5%	0.10
Los Alamos	18,558	0.9%	9	2.0%	0.48
Luna	26,996	1.4%	2	0.5%	0.07
McKinley	70,059	3.6%	9	2.0%	0.13
Mora	5,069	0.3%	0	0.0%	0.00
Otero	63,129	3.2%	6	1.4%	0.10
Quay	8,971	0.5%	0	0.0%	0.00
Rio Arriba	40,827	2.1%	4	0.9%	0.10
Roosevelt	19,142	1.0%	2	0.5%	0.10
Sandoval	117,866	6.0%	26	5.9%	0.22
San Juan	122,427	6.2%	28	6.3%	0.23
San Miguel	28,655	1.5%	13	2.9%	0.45
Santa Fe	142,955	7.3%	47	10.6%	0.33
Sierra	12,316	0.6%	2	0.5%	0.16
Socorro	18,118	0.9%	2	0.5%	0.11
Taos	31,608	1.6%	12	2.7%	0.38
Torrance	16,598	0.8%	1	0.2%	0.06
Union	3,792	0.2%	0	0.0%	0.00
Valencia	71,364	3.6%	12	2.7%	0.17
<b>Total</b>	<b>1,969,915</b>	<b>100%</b>	<b>443</b>	<b>100%</b>	<b>0.22</b>

<sup>1</sup> New Mexico Medical Board (September 2008). *Internal Data Run.*

### Map 3. Distribution of New Mexico Licensed Physicians' Assistants by County - 2007<sup>1</sup>



\*Number represents licensed physicians' assistants in each county. Licensed physicians' assistants may not currently be practicing, or may be practicing in another county.

<sup>1</sup> New Mexico Medical Board (September 2008). *Internal Data Run.*

# **NURSING PROFESSIONALS**



## THE REGISTERED NURSE WORKFORCE

As the largest health care occupation, registered nurses (RNs) held approximately 2.5 million jobs in 2007. The majority of RNs worked in hospitals (59%), but other industries also employed a large number of workers. Approximately 8% of RN jobs were in offices of physicians, 5% percent in home health care services, 5% percent in nursing care facilities, 4% percent in employment services, and 3% percent in outpatient care centers. The remainder worked mostly in government agencies, social assistance agencies, and educational services. Roughly 21% of RNs worked part time.<sup>1</sup>

The U.S. Health Resources and Services Administration (HRSA) reported that “the average age of a registered nurse in 1980 was 40 years old. By the mid 1990s, the average age was up to 47 years old.”<sup>2</sup> As the average age of nurses continues to increase, many workers will face retirement and will need to be replaced by other workers. The American Association of Colleges of Nursing reported that in 2006 and 2007 there was a 7.6% increase in entry-level enrollment for BSN programs. Employment of registered nurses is expected to grow 23% by 2016. However, this increase is not enough to match the projected need over the next decade.<sup>3</sup>

In addition, the number of seniors in our population is projected to increase significantly over the next two decades. The over-65 population is the largest growing segment of our population. Advancements in technology and medical treatment are allowing many people to live longer. As this population increases, they will require increased nursing care.

Figure 11 on the following page displays that in 2007, there were 824 licensed RNs for each 100,000 residents. When the states are compared, the District of Columbia had the most RNs per capita, and Arizona had the least. New Mexico ranked 49th when compared to the other states and the District of Columbia. There were 579 licensed RNs in the State for every 100,000 residents.

---

1 Bureau of Labor Statistics (nd), *Occupational Outlook Handbook, 2008-2009 Edition, Nurses*. Retrieved October 12, 2008 from <http://www.bls.gov/oco/ocos083.htm>

2 Health Resources and Services Administration, (2007). *The Registered Nurse Population: Findings from the 2004 National Sample Survey of Registered Nurses*. Retrieved October 2, 2008 from <http://bhpr.hrsa.gov/healthworkforce/rnsurvey04/>

3 World Wide Learn (nd) (2007). *Nursing: Fact & Figures*. Retrieved October 13, 2008 from <http://www.worldwidelearn.com/health-care/nursing/nursing-facts.htm>

**Figure 11. Rank of States Based on Number of Registered Nurses per 100,000 Residents – 2007\*1 2**

Rank	Location	# of RNs	Population	# of RNs Per 100,000	Rank	Location	# of RNs	Population	# of RNs Per 100,000
1	District of Columbia	8,110	588,292	1,379	27	Kansas	24,070	2,775,997	867
2	South Dakota	9,670	796,214	1,214	28	New York	166,990	19,297,729	865
3	Massachusetts	78,280	6,449,755	1,214	29	Indiana	54,770	6,345,289	863
4	North Dakota	7,000	639,715	1,094	30	Michigan	84,480	10,071,822	839
5	Maine	13,850	1,317,207	1,051		<b>UNITED STATES</b>	<b>2,485,530</b>	<b>301,621,157</b>	<b>824</b>
6	Pennsylvania	126,370	12,432,792	1,016	31	Wyoming	4,250	522,830	813
7	Minnesota	52,690	5,197,621	1,014	32	Florida	148,180	18,251,243	812
8	Nebraska	17,870	1,774,571	1,007	33	Illinois	104,130	12,852,548	810
9	Ohio	114,920	11,466,917	1,002	34	South Carolina	35,040	4,407,709	795
10	Rhode Island	10,600	1,057,832	1,002	35	Oregon	29,700	3,747,455	793
11	Connecticut	34,690	3,502,309	990	36	Arkansas	21,920	2,834,797	773
12	Iowa	29,550	2,988,046	989	37	Washington	49,910	6,468,424	772
13	Delaware	8,420	864,764	974	38	Colorado	36,850	4,861,515	758
14	New Hampshire	12,730	1,315,828	967	39	Alaska	5,150	683,478	753
15	Missouri	56,290	5,878,415	958	40	Hawaii	9,620	1,283,388	750
16	West Virginia	16,970	1,812,035	937	41	Virginia	57,740	7,712,091	749
17	Kentucky	39,120	4,241,474	922	42	Montana	7,160	957,861	747
18	Alabama	42,180	4,627,851	911	43	Oklahoma	25,700	3,617,316	710
19	Vermont	5,660	621,254	911	44	Texas	157,870	23,904,380	660
20	Louisiana	39,090	4,293,204	911	45	Georgia	62,230	9,544,750	652
21	Wisconsin	50,690	5,601,640	905	46	Idaho	9,600	1,499,402	640
22	New Jersey	78,510	8,685,920	904	47	California	233,200	36,553,215	638
23	Tennessee	54,960	6,156,719	893	48	Utah	16,670	2,645,330	630
24	North Carolina	80,090	9,061,032	884	49	<b>New Mexico</b>	<b>11,400</b>	<b>1,969,915</b>	<b>579</b>
25	Maryland	48,840	5,618,344	869	50	Nevada	14,670	2,565,382	572
26	Mississippi	25,350	2,918,785	869	51	Arizona	34,580	6,338,755	546

1 U.S. Census Bureau. (July 1, 2007.). *2007 Population Estimates*. Retrieved October 3, 2008 from [http://factfinder.census.gov/servlet/GCTTable?\\_bm=y&-geo\\_id=01000US&-\\_box\\_head\\_nbr=GCT-T1&-ds\\_name=PEP\\_2007\\_EST&-\\_lang=en&-redoLog=false&-mt\\_name=PEP\\_2007\\_EST\\_GCTT1\\_ST2&-format=US-9&-\\_sse=on](http://factfinder.census.gov/servlet/GCTTable?_bm=y&-geo_id=01000US&-_box_head_nbr=GCT-T1&-ds_name=PEP_2007_EST&-_lang=en&-redoLog=false&-mt_name=PEP_2007_EST_GCTT1_ST2&-format=US-9&-_sse=on)

2 Kaiser Family Foundation, State Health Facts. (July 8, 2008). *Registered Nurses per 100,000 Population, 2007*. Retrieved October 12, 2008 from <http://www.statehealthfacts.org/comparablemaptable.jsp?ind=439&cat=8>

## The Registered Nurse Workforce in New Mexico

Registered nurse education programs in New Mexico are regulated by the New Mexico Board of Nursing (NMBN). The NMBN facilitates continued improvement of established nursing education programs and provides criteria of minimal standards and rules for evaluation of programs of nursing.

According to the NMBN there are eighteen programs of Nursing in New Mexico. Some individuals choose to earn an associate's degree in nursing before entering a bachelor's degree program. There are two Baccalaureate Degree Programs, the University of New Mexico and New Mexico State University. Besides offering a Bachelors of Science in Nursing, both programs also offer a Masters Degree in Nursing. The Masters Degree programs are not subject to NMBN approval.<sup>1</sup>

The following institutions offer Associate Degree Programs in Nursing:

- ANAMARC Educational Institute
- Apollo College
- Central New Mexico Community College
- Clovis Community College
- Dona Ana Community College
- Eastern New Mexico University – Roswell
- Luna Community College
- New Mexico Junior College
- New Mexico State University – Alamogordo
- New Mexico State University – Carlsbad
- Northern New Mexico College
- Pima Medical Institute (PMI)
- San Juan College
- Santa Fe Community College
- University of New Mexico – Gallup
- Western New Mexico University

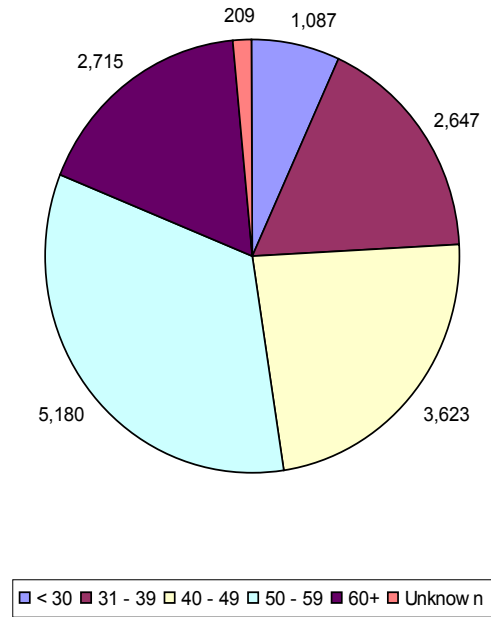
In 2007, 51.1% of RNs were over the age of 49 years. There were 7% of the RNs under the age of 30 years.<sup>2</sup>

---

1 New Mexico Board of Nursing (nd). *Annual Report to the Governor FY08*. Retrieved October 23, 2008 from [http://www.bon.state.nm.us/pdf/2008GovReport\\_20081003.pdf](http://www.bon.state.nm.us/pdf/2008GovReport_20081003.pdf)

2 New Mexico Board of Nursing (September 2008). *Internal Data Run*.

**Figure 12. Age of Licensed Registered Nurses in New Mexico - 2007**



There were 15,461 licensed registered nurses (RNs) in New Mexico in 2007. Slightly more than 39% of the State’s RNs are located in Bernalillo County. Another 29% are in Santa Fe, Dona Ana, San Juan, or Valencia Counties. The remaining 32% are in the other twenty-eight counties. While all counties have licensed RNs, the rate of RNs per 1,000 residents varies widely from county to county. Los Alamos, Santa Fe, Sandoval, Bernalillo, Grant, and San Miguel all had higher rates than the overall State rate of 7.8 RNs per 1,000 residents. Counties ranged from a low of 3.4 in Hidalgo and Luna, to a high of 10.3 in San Miguel.

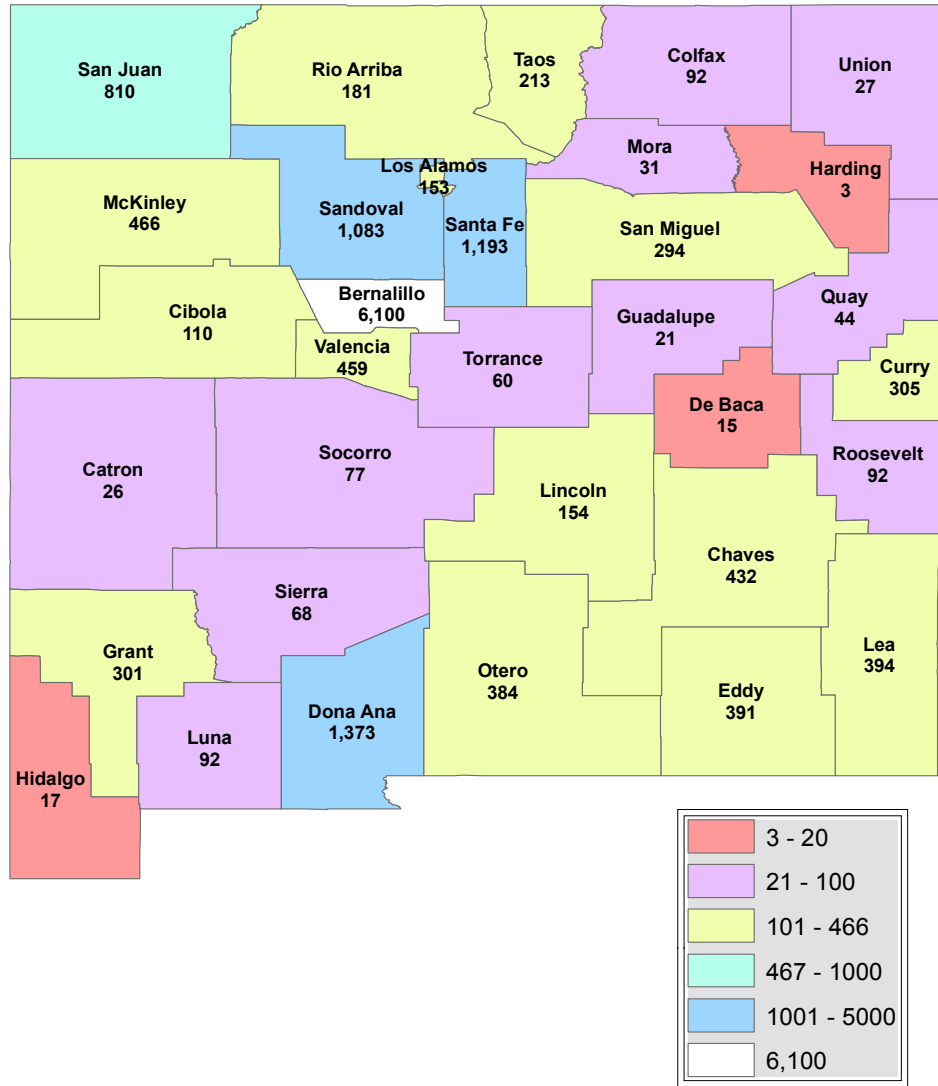
**Figure 13. New Mexico Licensed Registered Nurses  
by County - 2007<sup>1 2</sup>**

County	Population	Percent of New Mexico Population	Licensed RNs	Percent Of Total RNs	RN's Per 1,000 Population
Bernalillo	629,292	31.9%	6,100	39.45%	9.7
Catron	3,431	0.2%	26	0.17%	7.6
Chaves	62,595	3.2%	432	2.79%	6.9
Cibola	27,261	1.4%	110	0.71%	4.0
Colfax	13,216	0.7%	92	0.60%	7.0
Curry	45,328	2.3%	305	1.97%	6.7
De Baca	1,916	0.1%	15	0.10%	7.8
Dona Ana	198,791	10.1%	1,373	8.88%	6.9
Eddy	51,002	2.6%	391	2.53%	7.7
Grant	29,699	1.5%	301	1.95%	10.1
Guadalupe	4,447	0.2%	21	0.14%	4.7
Harding	716	0.0%	3	0.02%	4.2
Hidalgo	4,945	0.3%	17	0.11%	3.4
Lea	58,043	2.9%	394	2.55%	6.8
Lincoln	20,783	1.1%	154	1.00%	7.4
Los Alamos	18,558	0.9%	153	0.99%	8.2
Luna	26,996	1.4%	92	0.60%	3.4
McKinley	70,059	3.6%	466	3.01%	6.7
Mora	5,069	0.3%	31	0.20%	6.1
Otero	63,129	3.2%	384	2.48%	6.1
Quay	8,971	0.5%	44	0.28%	4.9
Rio Arriba	40,827	2.1%	181	1.17%	4.4
Roosevelt	19,142	1.0%	92	0.60%	4.8
Sandoval	117,866	6.0%	1,083	7.00%	9.2
San Juan	122,427	6.2%	810	5.24%	6.6
San Miguel	28,655	1.5%	294	1.90%	10.3
Santa Fe	142,955	7.3%	1,193	7.72%	8.3
Sierra	12,316	0.6%	68	0.44%	5.5
Socorro	18,118	0.9%	77	0.50%	4.2
Taos	31,608	1.6%	213	1.38%	6.7
Torrance	16,598	0.8%	60	0.39%	3.6
Union	3,792	0.2%	27	0.17%	7.1
Valencia	71,364	3.6%	459	2.97%	6.4
<b>Total</b>	<b>1,969,915</b>	<b>100%</b>	<b>15,461</b>	<b>100%</b>	<b>7.8</b>

1 U.S. Census Bureau. (July 1, 2007.). *2007 Population Estimates*. Retrieved October 3, 2008 from [http://factfinder.census.gov/servlet/GCTTable?\\_bm=y&-geo\\_id=04000US35&-\\_box\\_head\\_nbr=GCT-T1&-ds\\_name=PEP\\_2007\\_EST&-\\_lang=en&-mt\\_name=PEP\\_2007\\_EST\\_GCTT1\\_ST2&-format=ST-2&-\\_sse=on](http://factfinder.census.gov/servlet/GCTTable?_bm=y&-geo_id=04000US35&-_box_head_nbr=GCT-T1&-ds_name=PEP_2007_EST&-_lang=en&-mt_name=PEP_2007_EST_GCTT1_ST2&-format=ST-2&-_sse=on)

2 New Mexico Board of Nursing (September 2008). *Internal Data Run*.

### Map 4. Distribution of New Mexico Registered Nurses by County - 2007<sup>1</sup>



\*Number represents all licensed registered nurses in each county. Licensed registered nurses may not currently be practicing, or may be practicing in another county.

<sup>1</sup> New Mexico Board of Nursing (September 2008). *Internal Data Run.*

## THE LICENSED PRACTICAL NURSE WORKFORCE

There were roughly 749,000 licensed practical nurse (LPN) jobs in the United States in 2007. Typically, LPNs are generalists that work under the direction of a physician or an RN. They care for patients in many ways including the provision of basic bedside care, use and maintain equipment, and monitor patients. In the past 20 years, the number of LPNs working in hospitals has plummeted. Between 1984 and 2005 (the last year for which data is available), the number of LPNs employed in hospitals fell by 153,000 or 47 percent, even while the total number of LPNs in the country grew by 18 percent.<sup>1</sup>

Figure 15 presents the rank order of states by the number of licensed practical nurses in the workforce per 100,000 residents in 2000. Arkansas had the most LPNs per capita, and Oregon had the least. New Mexico ranked 42nd with 145.4 LPNs for every 100,000 residents.

---

<sup>1</sup> American Federation of State, County and Municipal Employees (nd), *The LPN: A Practical Way to Alleviate the Nursing Shortage*. Retrieved October 6, 2008 from <http://www.afscme.org/publications/14100.cfm>

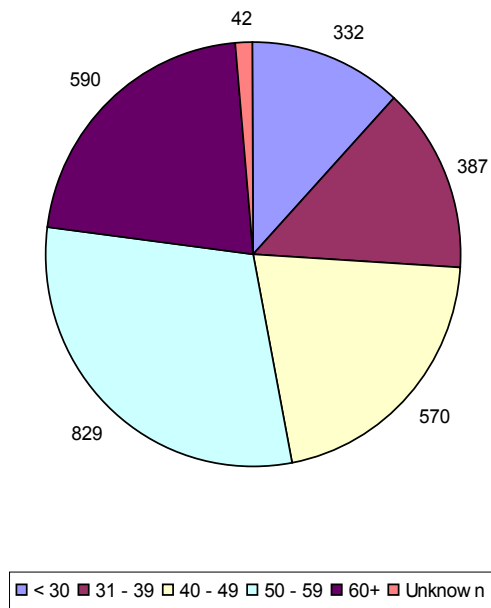
## The Licensed Practical Nurse Workforce in New Mexico

According to the NMBN, the following institutions offer a Practical Nursing Program:

- APS Career Enrichment Center
- Computer Career Center

In 2007, 51.6% of LPNs were over the age of 49 years. Approximately 12% of the LPNs were under age 30 years.<sup>1</sup>

**Figure 14. Age of Licensed Practical Nurses in New Mexico - 2007**



<sup>1</sup> New Mexico Board of Nursing (September 2008). *Internal Data Run.*

**Figure 15. Rank of States Based on Number of  
Licensed Practical Nurses per 100,000 Residents – 2000\*1 2**

Rank	Location	# of LPNs	Population	# of LPNs Per 100,000	Rank	Location	# of LPNs	Population	# of LPNs Per 100,000
1	Arkansas	9,785	2,673,400	366.0	26	Iowa	6,170	2,926,324	210.8
2	Oklahoma	11,510	3,450,654	333.6	27	Idaho	2,530	1,293,953	195.5
3	Louisiana	14,505	4,468,976	324.6	28	Wisconsin	10,465	5,363,675	195.1
4	Minnesota	15,875	4,919,479	322.7	29	North Carolina	15,560	8,049,313	193.3
5	North Dakota	2,025	642,200	315.3	30	Massachusetts	12,145	6,349,097	191.3
6	Mississippi	8,750	2,844,658	307.6	31	Connecticut	6,380	3,405,565	187.3
7	Alabama	13,515	4,447,100	303.9	32	Michigan	18,160	9,938,444	182.7
8	West Virginia	5,470	1,808,344	302.5	33	Delaware	1,415	783,600	180.6
9	Tennessee	17,025	5,689,283	299.2	34	New Jersey	15,110	8,414,350	179.6
10	Nebraska	4,980	1,711,263	291.0	35	Maine	2,260	1,274,923	177.3
11	Missouri	15,370	5,595,211	274.7	36	Maryland	9,335	5,296,486	176.2
12	Pennsylvania	32,785	12,281,054	267.0	37	Rhode Island	1,835	1,048,319	175.0
13	Vermont	1,620	608,827	266.1	38	New Hampshire	2,145	1,235,786	173.6
14	Ohio	29,970	11,353,140	264.0	39	Illinois	20,745	12,419,293	167.0
15	Indiana	14,925	6,080,485	245.5	40	District of Columbia	925	572,059	161.7
16	South Carolina	9,840	4,012,012	245.3	41	Washington	9,410	5,894,121	159.7
17	Kentucky	9,855	4,041,769	243.8	<b>42</b>	<b>New Mexico</b>	<b>2,645</b>	<b>1,819,046</b>	<b>145.4</b>
18	Virginia	17,185	7,078,515	242.8	43	California	46,190	33,871,648	136.4
19	Kansas	6,405	2,688,418	238.2	44	Arizona	6,930	5,130,632	135.1
20	Florida	37,675	15,982,378	235.7	45	Wyoming	665	493,782	134.7
21	Texas	48,760	20,851,820	233.8	46	Hawaii	1,570	1,211,537	129.6
22	Georgia	18,385	8,186,453	224.6	47	Utah	2,695	2,233,169	120.7
23	Montana	1,930	902,195	213.9	48	Colorado	5,140	4,301,261	119.5
24	New York	40,545	18,976,457	213.7	49	Nevada	2,065	1,998,257	103.3
25	South Dakota	1,600	754,844	212.0	50	Alaska	565	626,932	90.1
	<b>UNITED STATES</b>	<b>596,350</b>	<b>281,421,906</b>	<b>211.9</b>	51	Oregon	3,005	3,421,399	87.8

\*2000 is the most recent national data available on the number of LPNs by state.

1 U.S. Census Bureau. (April 2, 2001.). *2000 Population by State*. Retrieved November 17, 2008 from <http://www.census.gov/population/www/cen2000/briefs/phc-t2/tables/tab01.xls>

2 Health Resources and Services Administration. (nd). *Supply, Demand, and Use of Licensed Practical Nurses*. Retrieved November 17, 2008 from <http://bhpr.hrsa.gov/healthworkforce/reports/nursing/lpn/c2.htm>

There were 2,750 licensed practical nurses (LPNs) in New Mexico in 2007. Approximately 35% of the State's LPNs are located Bernalillo County. Another 23.4% are in Santa Fe, Dona Ana, San Juan, or Sandoval Counties. While all counties have LPN's, the rate of LPNs per 1,000 residents varies widely from county to county. Counties ranged from a low of .3 in Catron, to a high of 4.5 in San Miguel.

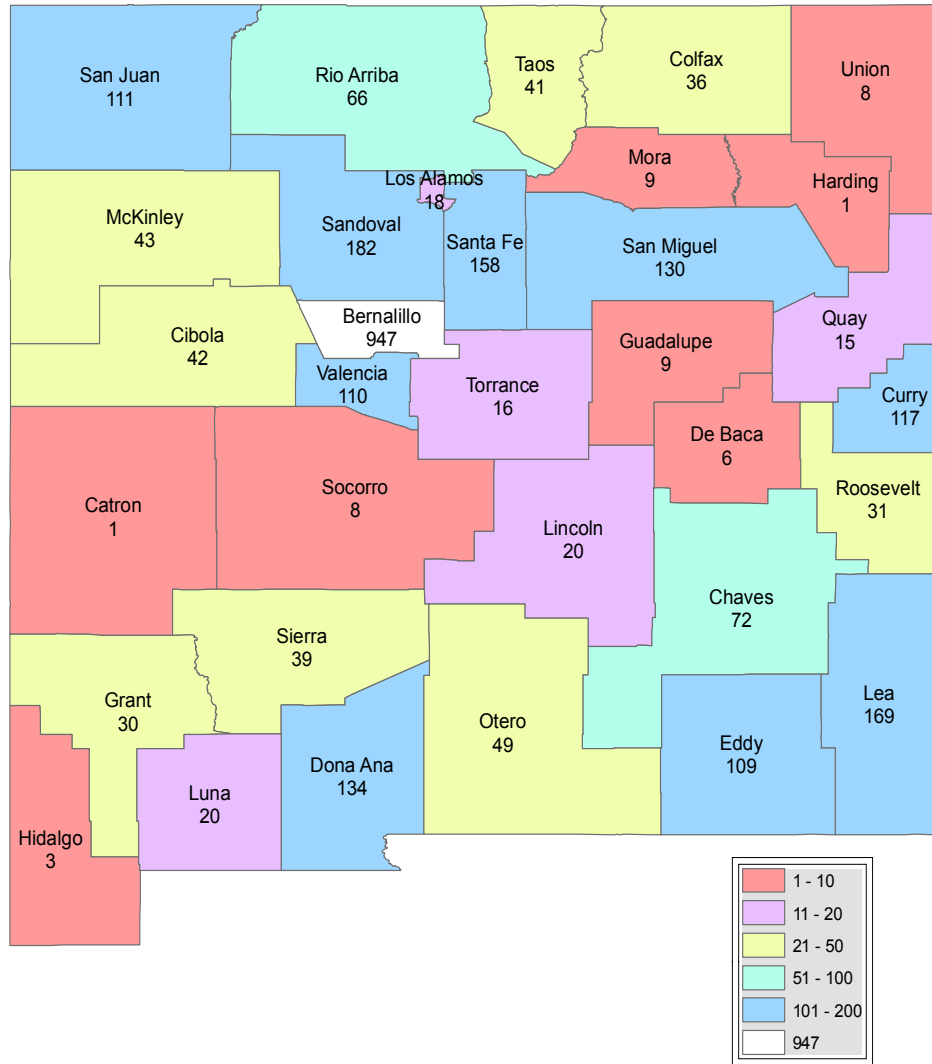
**Figure 16. New Mexico Licensed Practical Nurses by County - 2007<sup>1 2</sup>**

County	Population	Percent of New Mexico Population	Licensed LPNs	Percent Of Total LPNs	LPNs per 1,000 Population
Bernalillo	629,292	31.9%	947	34.44%	1.5
Catron	3,431	0.2%	1	0.04%	0.3
Chaves	62,595	3.2%	72	2.62%	1.2
Cibola	27,261	1.4%	42	1.53%	1.5
Colfax	13,216	0.7%	36	1.31%	2.7
Curry	45,328	2.3%	117	4.25%	2.6
De Baca	1,916	0.1%	6	0.22%	3.1
Dona Ana	198,791	10.1%	134	4.87%	0.7
Eddy	51,002	2.6%	109	3.96%	2.1
Grant	29,699	1.5%	30	1.09%	1.0
Guadalupe	4,447	0.2%	9	0.33%	2.0
Harding	716	0.0%	1	0.04%	1.4
Hidalgo	4,945	0.3%	3	0.11%	0.6
Lea	58,043	2.9%	169	6.15%	2.9
Lincoln	20,783	1.1%	20	0.73%	1.0
Los Alamos	18,558	0.9%	18	0.65%	1.0
Luna	26,996	1.4%	20	0.73%	0.7
McKinley	70,059	3.6%	43	1.56%	0.6
Mora	5,069	0.3%	9	0.33%	1.8
Otero	63,129	3.2%	49	1.78%	0.8
Quay	8,971	0.5%	15	0.55%	1.7
Rio Arriba	40,827	2.1%	66	2.40%	1.6
Roosevelt	19,142	1.0%	31	1.13%	1.6
Sandoval	117,866	6.0%	182	6.62%	1.5
San Juan	122,427	6.2%	111	4.04%	0.9
San Miguel	28,655	1.5%	130	4.73%	4.5
Santa Fe	142,955	7.3%	158	5.75%	1.1
Sierra	12,316	0.6%	39	1.42%	3.2
Socorro	18,118	0.9%	8	0.29%	0.4
Taos	31,608	1.6%	41	1.49%	1.3
Torrance	16,598	0.8%	16	0.58%	1.0
Union	3,792	0.2%	8	0.29%	2.1
Valencia	71,364	3.6%	110	4.00%	1.5
<b>Total</b>	<b>1,969,915</b>	<b>100%</b>	<b>2,750</b>	<b>100%</b>	<b>1.4</b>

1 U.S. Census Bureau. (July 1, 2007.). *2007 Population Estimates*. Retrieved October 3, 2008 from [http://factfinder.census.gov/servlet/GCTTable?\\_bm=y&-geo\\_id=04000US35&-\\_box\\_head\\_nbr=GCT-T1&-ds\\_name=PEP\\_2007\\_EST&-\\_lang=en&-mt\\_name=PEP\\_2007\\_EST\\_GCTT1\\_ST2&-format=ST-2&-\\_sse=on](http://factfinder.census.gov/servlet/GCTTable?_bm=y&-geo_id=04000US35&-_box_head_nbr=GCT-T1&-ds_name=PEP_2007_EST&-_lang=en&-mt_name=PEP_2007_EST_GCTT1_ST2&-format=ST-2&-_sse=on)

2 New Mexico Board of Nursing (September 2008). *Internal Data Run*.

### Map 5. Distribution of New Mexico Licensed Practical Nurses by County - 2007<sup>1</sup>



\*Number represents all licensed practical nurses in each county. Licensed practical nurses may not currently be practicing, or may be practicing in another county.

<sup>1</sup> New Mexico Board of Nursing (September 2008). *Internal Data Run.*

# **MENTAL HEALTH PROFESSIONALS**



## THE PSYCHIATRIST WORKFORCE

Psychiatrists are the primary caregivers in the area of mental health. They assess and treat mental illnesses through a combination of psychotherapy, psychoanalysis, hospitalization, and medication. Psychotherapy involves regular discussions with patients about their problems; the psychiatrist helps them find solutions through changes in their behavioral patterns, the exploration of their past experiences, or group and family therapy sessions. Psychiatrists are able to prescribe medication to treat mental disorders, unlike psychologists, and they also make use of therapy and other techniques to positively change behaviors.<sup>1</sup>

Psychiatrists undergo extensive training which includes four years each of undergraduate education, medical school and postgraduate residency. Additionally, many psychiatrists who choose a subspecialty complete a post-residency fellowship.

Common specialties include:

- Psychopharmacology
- Industrial Psychiatry
- Geriatric Psychiatry
- Child and Adolescent Psychiatry
- Geriatric Psychiatry
- Forensic Psychiatry

Figure 17 presents the estimated number of psychiatrists that were practicing in 2004 and the rate of psychiatrists per 100,000 residents in each state. The highest rate is the District of Columbia where there were 55.21 psychiatrists for every 100,000 residents. Of the forty states and the District of Columbia that were examined, New Mexico ranked 23<sup>rd</sup>. Louisiana had the fewest psychiatrists with 1.11 per 100,000 residents.<sup>2</sup>

---

1 Education Portal (October 27, 2008). *Psychiatr Professions – An Overview*. Retrieved October 27, 2008 from [http://education-portal.com/articles/Psychiatry\\_Professions:\\_An\\_Overview.html](http://education-portal.com/articles/Psychiatry_Professions:_An_Overview.html)

2 Kaiser Family Foundation, State Health Facts. (nd) *Number of Nonfederal Physicians 2007*. Retrieved October 15, 2008 from <http://www.statehealthfacts.org/comparablemaptable.jsp?ind=429&cat=8>

## The Psychiatrist Workforce in New Mexico

Of the 279 psychiatrists licensed in New Mexico, 51.61% are in Bernalillo County. Slightly less than 18% are in Santa Fe County. There are 14 counties that have no psychiatrists, and the remaining 30.5% of the psychiatrists are in the remaining 17 counties.

**Figure 17. Rank Order by Estimated Number of Psychiatrists Per 100,000 Residents by Select States – 2004\*1 2**

Rank	Location	# of Psychiatrists	Population	# of Psychiatrists Per 100,000 Residents	Rank	Location	# of Psychiatrists	Population	# of Psychiatrists Per 100,000 Residents
1	District of Columbia	320	579,621	55.21	22	Ohio	720	11,452,808	6.29
2	Vermont	140	618,794	22.62	<b>23</b>	<b>New Mexico</b>	<b>110</b>	<b>1,892,182</b>	<b>5.81</b>
3	New York	2,720	19,258,479	14.12	24	Idaho	80	1,391,751	5.75
4	Massachusetts	870	6,433,676	13.52	25	Wisconsin	300	5,510,199	5.44
5	Washington	810	6,189,869	13.09		<b>UNITED STATES</b>	<b>15,300</b>	<b>293,191,511</b>	<b>5.22</b>
6	North Dakota	80	636,814	12.56	26	Iowa	150	2,946,009	5.09
7	Connecticut	390	3,481,890	11.20	27	Texas	1,130	22,454,811	5.03
8	West Virginia	200	1,804,618	11.08	28	Kentucky	200	4,139,859	4.83
9	Maine	140	1,308,892	10.70	29	Indiana	270	6,218,863	4.34
10	New Jersey	760	8,641,235	8.80	30	North Carolina	370	8,538,378	4.33
11	Delaware	70	827,671	8.46	31	Arizona	240	5,744,367	4.18
12	Rhode Island	90	1,072,859	8.39	32	Michigan	390	10,102,720	3.86
13	Utah	200	2,430,841	8.23	33	Alabama	160	4,508,540	3.55
14	Pennsylvania	960	12,348,618	7.77	34	Arkansas	90	2,742,898	3.28
15	Nebraska	130	1,743,954	7.45	35	Mississippi	90	2,886,860	3.12
16	Missouri	410	5,744,753	7.14	36	Florida	460	17,342,623	2.65
17	Minnesota	360	5,085,626	7.08	37	Illinois	330	12,680,053	2.60
18	New Hampshire	90	1,294,285	6.95	38	Nevada	60	2,329,960	2.58
19	Virginia	500	7,464,033	6.70	39	Oklahoma	90	3,516,552	2.56
20	Tennessee	380	5,912,063	6.43	40	Georgia	120	8,921,371	1.35
21	South Carolina	270	4,201,437	6.43	41	Louisiana	50	4,487,966	1.11

\*Data not reported for Alaska, California, Colorado, Hawaii, Kansas, Maryland, Montana, Oregon, South Dakota, or Wyoming.

1 U.S. Census Bureau. (July 1, 2007.). *2007 Population Estimates*. Retrieved October 3, 2008 from [http://factfinder.census.gov/servlet/GCTTable?\\_bm=y&-geo\\_id=01000US&-\\_box\\_head\\_nbr=GCT-T1&-ds\\_name=PEP\\_2007\\_EST&-\\_lang=en&-redoLog=false&-mt\\_name=PEP\\_2007\\_EST\\_GCTT1\\_ST2&-format=US-9&-\\_sse=on](http://factfinder.census.gov/servlet/GCTTable?_bm=y&-geo_id=01000US&-_box_head_nbr=GCT-T1&-ds_name=PEP_2007_EST&-_lang=en&-redoLog=false&-mt_name=PEP_2007_EST_GCTT1_ST2&-format=US-9&-_sse=on)

2 The New York Center for Health Workforce Studies (October 2006). *The United States Health Workforce Profile*. 136

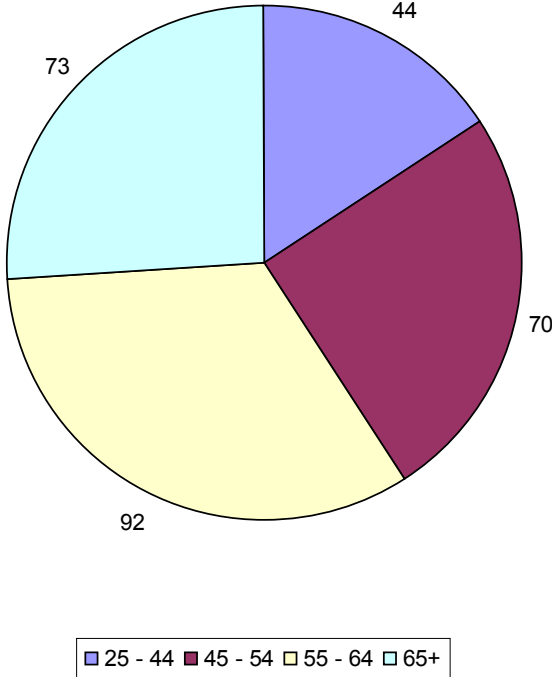
**Figure 18. New Mexico Psychiatrists by County - 2007<sup>1</sup>**

County	Population	Percent of Population	Licensed Psychiatrists	% Total Psychiatrists	Rate Per 1,000 Population
Bernalillo	629,292	31.9%	144	51.61%	0.23
Catron	3,431	0.2%	0	0.00%	0.00
Chaves	62,595	3.2%	3	1.08%	0.05
Cibola	27,261	1.4%	0	0.00%	0.00
Colfax	13,216	0.7%	0	0.00%	0.00
Curry	45,328	2.3%	4	1.43%	0.09
De Baca	1,916	0.1%	0	0.00%	0.00
Dona Ana	198,791	10.1%	15	5.38%	0.08
Eddy	51,002	2.6%	4	1.43%	0.08
Grant	29,699	1.5%	4	1.43%	0.13
Guadalupe	4,447	0.2%	0	0.00%	0.00
Harding	716	0.0%	0	0.00%	0.00
Hidalgo	4,945	0.3%	0	0.00%	0.00
Lea	58,043	2.9%	2	0.72%	0.03
Lincoln	20,783	1.1%	1	0.36%	0.05
Los Alamos	18,558	0.9%	1	0.36%	0.05
Luna	26,996	1.4%	0	0.00%	0.00
McKinley	70,059	3.6%	4	1.43%	0.06
Mora	5,069	0.3%	0	0.00%	0.00
Otero	63,129	3.2%	0	0.00%	0.00
Quay	8,971	0.5%	0	0.00%	0.00
Rio Arriba	40,827	2.1%	0	0.00%	0.00
Roosevelt	19,142	1.0%	0	0.00%	0.00
Sandoval	117,866	6.0%	18	6.45%	0.15
San Juan	122,427	6.2%	7	2.51%	0.06
San Miguel	28,655	1.5%	8	2.87%	0.28
Santa Fe	142,955	7.3%	50	17.92%	0.35
Sierra	12,316	0.6%	1	0.36%	0.08
Socorro	18,118	0.9%	3	1.08%	0.17
Taos	31,608	1.6%	5	1.79%	0.16
Torrance	16,598	0.8%	1	0.36%	0.06
Union	3,792	0.2%	0	0.00%	0.00
Valencia	71,364	3.6%	4	1.43%	0.06
<b>Total</b>	<b>1,969,915</b>	<b>100%</b>	<b>279</b>	<b>100.00%</b>	<b>0.14</b>

Of the 279 licensed psychiatrists in New Mexico in 2007, 59.1% are 55 years of age or older. Slightly over 25% are between the age 45 years and 54 years, and the remaining 15.8% are 44 years or younger.

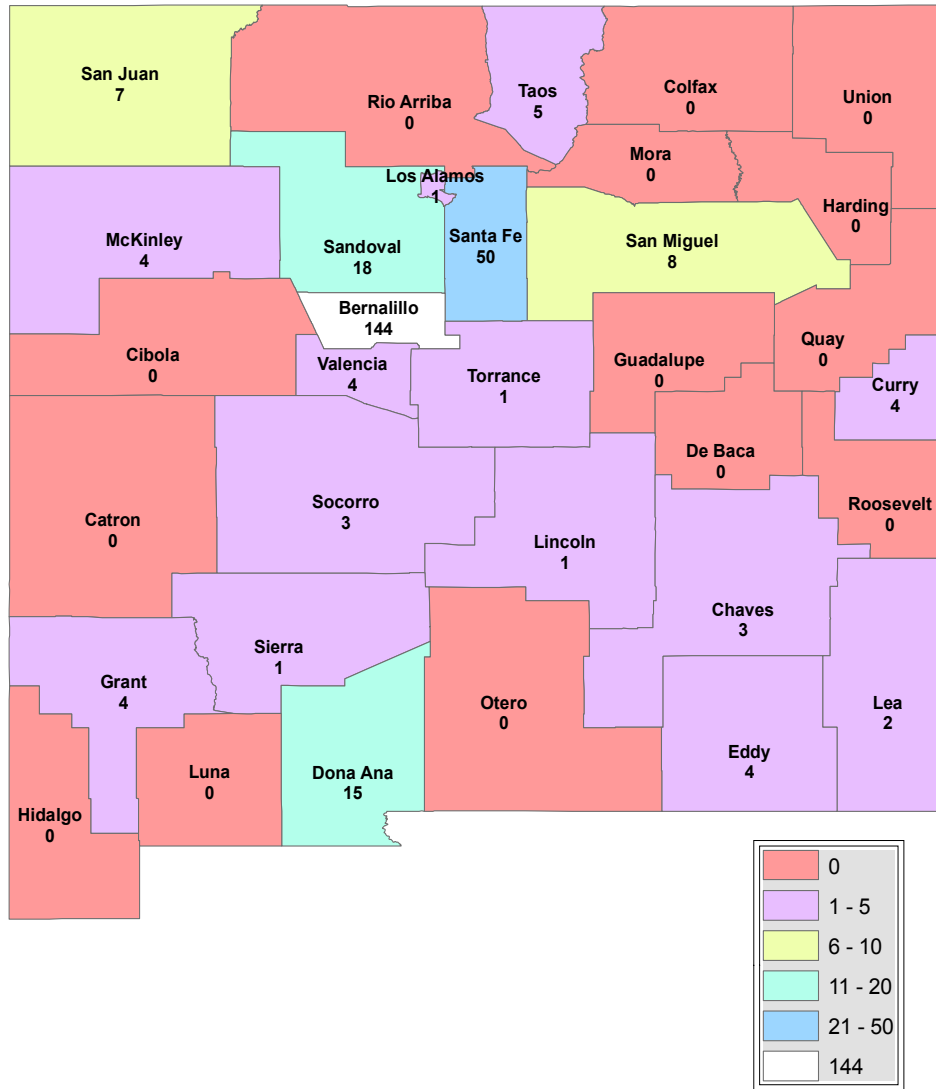
<sup>1</sup> New Mexico Medical Board (September 2008). *Internal Data Run*.

**Figure 19. Age of Licensed Psychiatrists in New Mexico – 2007<sup>1</sup>**



<sup>1</sup> New Mexico Medical Board (September 2008). *Internal Data Run.*

### Map 6. Distribution of New Mexico Licensed Psychiatrists by County - 2007<sup>1</sup>



\*Number represents licensed psychiatrists in each county. Licensed psychiatrists may not currently be practicing, or may be practicing in another county.

<sup>1</sup> New Mexico Medical Board (September 2008). *Internal Data Run.*

## THE PSYCHOLOGIST WORKFORCE<sup>1</sup>

Psychologists apply their knowledge to a wide range of endeavors, including health and human services, management, education, law, and sports. Psychologists held approximately 166,000 jobs in 2006. Educational institutions employed about 29 percent of psychologists in positions other than teaching, such as counseling, testing, research, and administration. About 21 percent were employed in health care, primarily in offices of mental health practitioners, hospitals, physicians' offices, and outpatient mental health and substance abuse centers. Government agencies at the State and local levels employed psychologists in correctional facilities, law enforcement, and other settings.

They usually specialize in one of a number of different areas. The largest specialty is clinical psychology. Clinical psychologists help mentally and emotionally distressed clients adjust to life and may assist medical and surgical patients in dealing with illnesses or injuries. Clinical psychologists often interview patients and give diagnostic tests. They may provide individual, family, or group psychotherapy and may design and implement behavior modification programs. Some clinical psychologists collaborate with physicians and other specialists to develop and implement treatment and intervention programs that patients can understand and comply with. Other clinical psychologists work in universities and medical schools, where they train graduate students in the delivery of mental health and behavioral medicine services. Some administer community mental health programs.

Often, clinical psychologists consult with other medical personnel regarding the best treatment for patients, especially treatment that includes medication. Clinical psychologists generally are not permitted to prescribe medication to treat patients; only psychiatrists and other medical doctors may prescribe most medications. However, two States—Louisiana and New Mexico—currently allow appropriately trained clinical psychologists to prescribe medication with some limitations.

Figure 20 presents the number of licensed psychologists in the United States in 2004 and the rate of psychologists per 100,000 residents in each state. The highest rate is the District of Columbia where there are slightly over 100 psychologists for every 100,000 residents. The lowest rate is Louisiana which had 10.65 psychologists for every 100,000 residents. According to the *United States Health Workforce Profile, 2006*, the number of New Mexico psychologists is reported at 780, with a rate of 41.22 psychologists for every 1,000 residents.<sup>2</sup> When compared to other states, New Mexico is 12<sup>th</sup> in the nation.

<sup>1</sup> Bureau of Labor Statistics (nd), *Occupational Outlook Handbook, 2008-2009 Edition, Physician Assistants*. Retrieved October 30, 2008 from <http://www.bls.gov/oco/ocos056.htm>

<sup>2</sup> The New York Center for Health Workforce Studies (October 2006). *The United States Health Workforce Profile*. 136

**Figure 20. Rank by Estimated Number of Psychologists Per 100,000 Residents by State - 2004<sup>1 2</sup>**

Rank	Location	# of Psychologists	Population	# of Psychologists Per 100,000 Residents	Rank	Location	# of Psychologists	Population	# of Psychologists Per 100,000 Residents
1	District of Columbia	580	579,621	100.07	26	Idaho	440	1,391,751	31.61
2	Delaware	650	827,671	78.53	27	Michigan	3,160	10,102,720	31.28
3	Rhode Island	650	1,072,859	60.59	28	Pennsylvania	3,830	12,348,618	31.02
4	Massachusetts	3,690	6,433,676	57.35	29	Ohio	3,530	11,452,808	30.82
5	Minnesota	2,910	5,085,626	57.22	30	Maine	390	1,308,892	29.80
6	New Jersey	4,840	8,641,235	56.01	31	Alaska	190	661,661	28.72
7	Connecticut	1,900	3,481,890	54.57	32	Virginia	2,140	7,464,033	28.67
8	Vermont	310	618,794	50.10	33	Oregon	1,000	3,583,027	27.91
9	New York	9,590	19,258,479	49.80	34	Oklahoma	980	3,516,552	27.87
10	Kansas	1,230	2,730,828	45.04	35	Florida	4,820	17,342,623	27.79
11	Illinois	5,500	12,680,053	43.38	36	Nebraska	460	1,743,954	26.38
12	<b>New Mexico</b>	<b>780</b>	<b>1,892,182</b>	<b>41.22</b>	37	North Carolina	2,200	8,538,378	25.77
13	Hawaii	510	1,254,172	40.66	38	South Carolina	1,070	4,201,437	25.47
14	California	14,490	35,721,991	40.56	39	Kentucky	1,040	4,139,859	25.12
15	Wisconsin	2,220	5,510,199	40.29	40	Iowa	740	2,946,009	25.12
16	Montana	370	926,721	39.93	41	Missouri	1,330	5,744,753	23.15
17	New Hampshire	510	1,294,285	39.40	42	Tennessee	1,310	5,912,063	22.16
18	Washington	2,250	6,189,869	36.35	43	Texas	4,600	22,454,811	20.49
19	North Dakota	230	636,814	36.12	44	Indiana	1,220	6,218,863	19.62
20	Colorado	1,590	4,609,264	34.50	45	Arkansas	520	2,742,898	18.96
21	Utah	830	2,430,841	34.14	46	Mississippi	530	2,886,860	18.36
	<b>UNITED STATES</b>	<b>98,420</b>	<b>293,191,511</b>	<b>33.57</b>	47	South Dakota	140	774,129	18.08
22	Arizona	1,890	5,744,367	32.90	48	Georgia	1,420	8,921,371	15.92
23	West Virginia	580	1,804,618	32.14	49	Nevada	370	2,329,960	15.88
24	Maryland	1,770	5,537,662	31.96	50	Louisiana	480	4,487,966	10.70
25	Wyoming	160	503,258	31.79	51	Alabama	480	4,508,540	10.65

1 U.S. Census Bureau. (July 1, 2007.). *2007 Population Estimates*. Retrieved October 3, 2008 from [http://factfinder.census.gov/servlet/GCTTable?\\_bm=y&-geo\\_id=01000US&-\\_box\\_head\\_nbr=GCT-T1&-ds\\_name=PEP\\_2007\\_EST&-\\_lang=en&-redoLog=false&-mt\\_name=PEP\\_2007\\_EST\\_GCTT1\\_ST2&-format=US-9&-\\_sse=on](http://factfinder.census.gov/servlet/GCTTable?_bm=y&-geo_id=01000US&-_box_head_nbr=GCT-T1&-ds_name=PEP_2007_EST&-_lang=en&-redoLog=false&-mt_name=PEP_2007_EST_GCTT1_ST2&-format=US-9&-_sse=on)

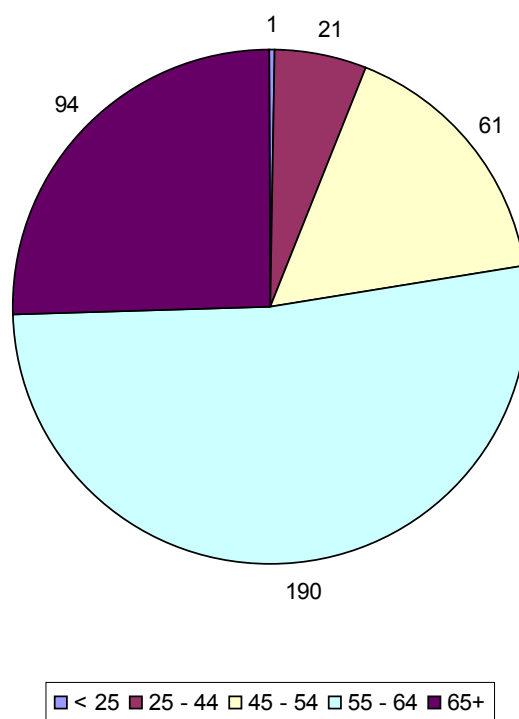
2 Kaiser Family Foundation, State Health Facts. (nd) *Projected Number of Physician Assistants in Clinical Practice, as of January 1, 2008*. Retrieved October 18, 2008 from <http://www.statehealthfacts.org/comparetable.jsp?ind=440&cat=8&sub=103&yr=63&typ=1&sort=a&o>

## The Psychologist Workforce in New Mexico

Signed by former Governor Gary Johnson on March 5, 2002, New Mexico passed the first state legislation, HB 170, which allows some psychologists to have prescriptive authority. The program directed by the legislation was implemented in 2005.<sup>1</sup>

Of the 524 licensed psychologists in New Mexico in 2007, 157 did not report their age. For the remaining 367, 77.4% are 55 years of age or older. Slightly over 16% are between the age 45 years and 54 years, and the remaining 6% are 44 years or younger.

**Figure 21. Age of Licensed Psychologists in New Mexico – 2007<sup>2</sup>**



<sup>1</sup> New Mexico Statutory Annotated, (nd) Retrieved November 7, 2008 from <http://www.nmcpr.state.nm.us/NMAC/parts/title16/16.019.0004.htm>

<sup>2</sup> New Mexico Medical Board (September 2008). *Internal Data Run*.

Of the 524 psychologists licensed in New Mexico in 2007, 52.1% were in Bernalillo County. Slightly more than 14% are in Santa Fe County. There are 12 counties that have no psychologists, and 33.8% are in the remaining 19 counties.

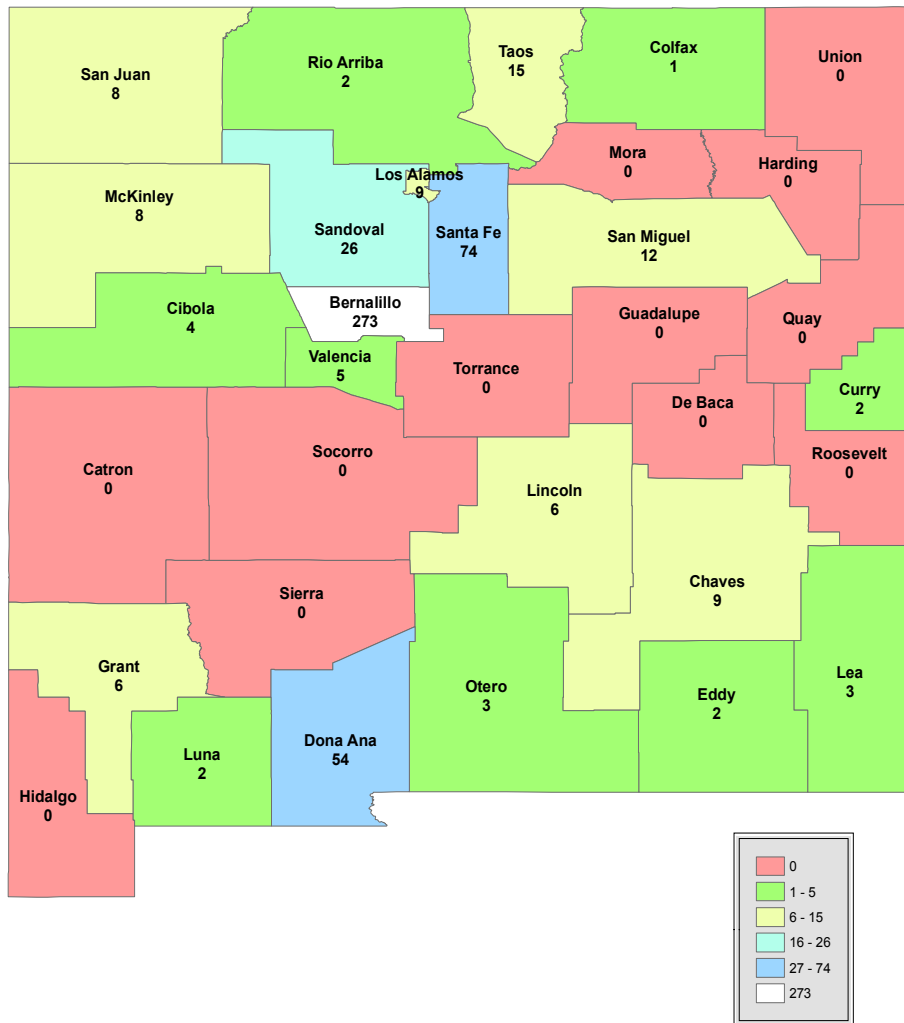
**Figure 22. New Mexico Licensed Psychologists by County - 2007<sup>1 2</sup>**

County	Population	Percent of New Mexico Population	Licensed Psychologists	Percent Of Total Psychologists	Psychologists Per 1,000 Population
Bernalillo	629,292	31.9%	273	52.1%	0.43
Catron	3,431	0.2%	0	0.0%	0.00
Chaves	62,595	3.2%	9	1.7%	0.14
Cibola	27,261	1.4%	4	0.8%	0.15
Colfax	13,216	0.7%	1	0.2%	0.08
Curry	45,328	2.3%	2	0.4%	0.04
De Baca	1,916	0.1%	0	0.0%	0.00
Dona Ana	198,791	10.1%	54	10.3%	0.27
Eddy	51,002	2.6%	2	0.4%	0.04
Grant	29,699	1.5%	6	1.1%	0.20
Guadalupe	4,447	0.2%	0	0.0%	0.00
Harding	716	0.0%	0	0.0%	0.00
Hidalgo	4,945	0.3%	0	0.0%	0.00
Lea	58,043	2.9%	3	0.6%	0.05
Lincoln	20,783	1.1%	6	1.1%	0.29
Los Alamos	18,558	0.9%	9	1.7%	0.48
Luna	26,996	1.4%	2	0.4%	0.07
McKinley	70,059	3.6%	8	1.5%	0.11
Mora	5,069	0.3%	0	0.0%	0.00
Otero	63,129	3.2%	3	0.6%	0.05
Quay	8,971	0.5%	0	0.0%	0.00
Rio Arriba	40,827	2.1%	2	0.4%	0.05
Roosevelt	19,142	1.0%	0	0.0%	0.00
Sandoval	117,866	6.0%	26	5.0%	0.22
San Juan	122,427	6.2%	8	1.5%	0.07
San Miguel	28,655	1.5%	12	2.3%	0.42
Santa Fe	142,955	7.3%	74	14.1%	0.52
Sierra	12,316	0.6%	0	0.0%	0.00
Socorro	18,118	0.9%	0	0.0%	0.00
Taos	31,608	1.6%	15	2.9%	0.47
Torrance	16,598	0.8%	0	0.0%	0.00
Union	3,792	0.2%	0	0.0%	0.00
Valencia	71,364	3.6%	5	1.0%	0.07
<b>Total</b>	<b>1,969,915</b>	<b>100%</b>	<b>524</b>	<b>100.0%</b>	<b>0.27</b>

1 U.S. Census Bureau. (July 1, 2007.). *2007 Population Estimates*. Retrieved October 3, 2008 from [http://factfinder.census.gov/servlet/GCTTable?\\_bm=y&-geo\\_id=04000US35&-\\_box\\_head\\_nbr=GCT-T1&-ds\\_name=PEP\\_2007\\_EST&-\\_lang=en&-mt\\_name=PEP\\_2007\\_EST\\_GCTT1\\_ST2&-format=ST-2&-\\_sse=on](http://factfinder.census.gov/servlet/GCTTable?_bm=y&-geo_id=04000US35&-_box_head_nbr=GCT-T1&-ds_name=PEP_2007_EST&-_lang=en&-mt_name=PEP_2007_EST_GCTT1_ST2&-format=ST-2&-_sse=on)

2 New Mexico Board of Nursing (September 2008). *Internal Data Run*.

### Map 7. Distribution of New Mexico Licensed Psychologists by County - 2007<sup>1</sup>



\*Number represents licensed psychologists in each county. Licensed psychologists may not currently be practicing, or may be practicing in another county.

<sup>1</sup> New Mexico Medical Board (September 2008). *Internal Data Run.*



# DENTAL PROFESSIONALS



## THE DENTIST WORKFORCE

The American Dental Association (ADA) reported that there were 179,594 active dentists in 2006. Slightly less than 92% (164,864) were in private practice.<sup>1</sup> In contrast, the U.S. Bureau of Labor Statistics (BLS) estimated that there were 161,000 dentists employed in 2006. Of this number, 136,000 (85%) were in general practice, and 25,000 (15%) practiced in a specialty area. Of the specialties, Orthodontists were the most prominent (9,200), and 7,700 practiced oral and maxillofacial surgery.<sup>2</sup>

In 2006, there were 56 dental schools accredited by the ADA. Over the past fifteen years, seven dental schools have closed. While it is possible to gain admittance to a dental school with a minimum of two years of college as a prerequisite, most dental students have at least a bachelor's degree before entering dental school. In most cases, it takes four academic years to earn a Doctor of Dental Medicine (DDM) or the degree of Doctor of Dental Surgery (DDS). In addition to a degree from an accredited dental school, dentists must also be licensed by the state that they practice in. In most cases, this requires passing a written and practical examination.<sup>3</sup>

It is anticipated that employment of dentists will increase by 9% through 2016. This growth is based on the increase in population and the increasing number of elderly people who will require complicated dental work. Some insurance providers have increased the basic dental coverage that they offer. Individuals with new or expanded dental insurance are most likely to visit a dentist than if they did not have insurance. Along with new technologies and materials, productivity of dentists should increase with the continued growth of responsibilities and tasks performed by dental hygienists and dental assistants.<sup>4</sup>

There were 66.3 licensed dentists for each 100,000 residents in the United States in 2007. The District of Columbia had the most dentists per capita, while Arkansas had the least. New Mexico ranked 50<sup>th</sup> when compared to the other states and the District of Columbia. There are 44.2 licensed dentists in New Mexico for every 100,000 residents. This represents a slight increase over the number of dentists in 2006.

---

1 American Dental Association (October 2008), *Survey and Frequently Asked Questions*. Retrieved October 4, 2008 from <http://www.ada.org/ada/prod/survey/faq.asp>

2 Bureau of Labor Statistics (nd), *Occupational Outlook Handbook, 2008-2009 Edition, Dentists*. Retrieved October 3, 2008 from <http://www.bls.gov/oco/ocos072.htm>

3 Ibid

4 Ibid

**Figure 23. Rank of States Based on the Number of Dentists  
Per 100,000 Residents - 2007<sup>1 2</sup>**

Rank	Location	# of Dentists	Population	# of Dentists Per 100,000 Residents	Rank	Location	# of Dentists	Population	# of Dentists Per 100,000 Residents
1	District of Columbia	825	588,292	140.2	26	Vermont	360	621,254	57.9
2	Massachusetts	6,356	6,449,755	98.5	27	Nevada	1,483	2,565,382	57.8
3	Nebraska	1,622	1,774,571	91.4	28	West Virginia	1,046	1,812,035	57.7
4	New York	16,896	19,297,729	87.6	29	Florida	10,279	18,251,243	56.3
5	New Jersey	7,524	8,685,920	86.6	30	Tennessee	3,440	6,156,719	55.9
6	Maryland	4,831	5,618,344	86.0	31	Oklahoma	2,011	3,617,316	55.6
7	California	30,772	36,553,215	84.2	32	Arizona	3,518	6,338,755	55.5
8	Connecticut	2,833	3,502,309	80.9	33	Montana	526	957,861	54.9
9	Hawaii	1,032	1,283,388	80.4	34	Louisiana	2,328	4,293,204	54.2
10	Pennsylvania	9,096	12,432,792	73.2	35	Indiana	3,410	6,345,289	53.7
11	Washington	4,710	6,468,424	72.8	36	Kansas	1,475	2,775,997	53.1
12	Alaska	492	683,478	72.0	37	Rhode Island	562	1,057,832	53.1
13	Colorado	3,436	4,861,515	70.7	38	Missouri	3,089	5,878,415	52.5
14	Minnesota	3,583	5,197,621	68.9	39	North Dakota	336	639,715	52.5
15	Kentucky	2,918	4,241,474	68.8	40	South Carolina	2,288	4,407,709	51.9
16	Illinois	8,705	12,852,548	67.7	41	Maine	671	1,317,207	50.9
17	Michigan	6,807	10,071,822	67.6	42	Texas	12,125	23,904,380	50.7
	<b>UNITED STATES</b>	<b>199,870</b>	<b>301,621,157</b>	<b>66.3</b>	43	North Carolina	4,549	9,061,032	50.2
18	Virginia	4,995	7,712,091	64.8	44	Wyoming	256	522,830	49.0
19	Utah	1,704	2,645,330	64.4	45	Alabama	2,251	4,627,851	48.6
20	Iowa	1,884	2,988,046	63.1	46	South Dakota	379	796,214	47.6
21	New Hampshire	815	1,315,828	61.9	47	Georgia	4,528	9,544,750	47.4
22	Wisconsin	3,452	5,601,640	61.6	48	Delaware	398	864,764	46.0
23	Oregon	2,264	3,747,455	60.4	49	Mississippi	1,321	2,918,785	45.3
24	Idaho	902	1,499,402	60.2	<b>50</b>	<b>New Mexico</b>	<b>871</b>	<b>1,969,915</b>	<b>44.2</b>
25	Ohio	6,758	11,466,917	58.9	51	Arkansas	1,158	2,834,797	40.8

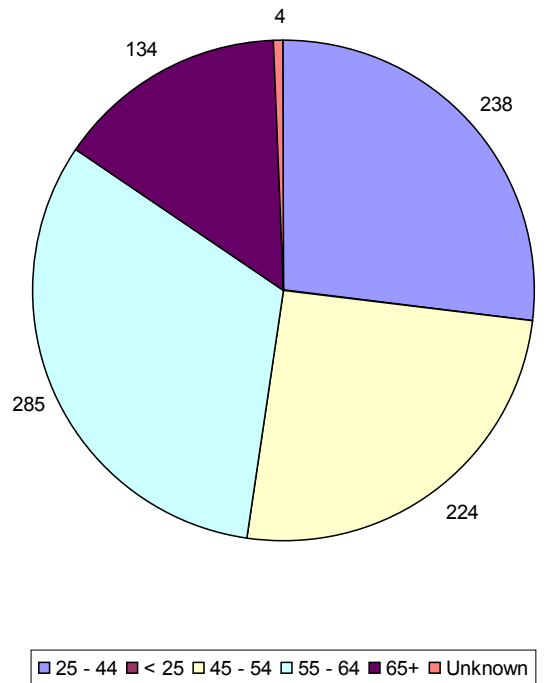
1 U.S. Census Bureau. (July 1, 2007.). *2007 Population Estimates*. Retrieved October 3, 2008 from [http://factfinder.census.gov/servlet/GCTTable?\\_bm=y&-geo\\_id=01000US&-\\_box\\_head\\_nbr=GCT-T1&-ds\\_name=PEP\\_2007\\_EST&-lang=en&-redoLog=false&-mt\\_name=PEP\\_2007\\_EST\\_GCTT1\\_ST2&-format=US-9&-sse=on](http://factfinder.census.gov/servlet/GCTTable?_bm=y&-geo_id=01000US&-_box_head_nbr=GCT-T1&-ds_name=PEP_2007_EST&-lang=en&-redoLog=false&-mt_name=PEP_2007_EST_GCTT1_ST2&-format=US-9&-sse=on)

2 American Dental Association (October 2008), *Survey and Frequently Asked Questions*. Retrieved October 4, 2008 from <http://www.ada.org/ada/prod/survey/faq.asp>

## The Dental Workforce in New Mexico

Slightly more than 47% of New Mexico’s dentists are over the age of 54 years. More than 15% are older than 64 years, and 27% are under the age of 45 years.

**Figure 24. Age of Licensed Dentists in New Mexico – 2007**



The number of licensed dentists in New Mexico increased from 882 in 2006, to 885 in 2007. As presented in Figure 25, slightly more than 42% of the dentists are licensed in Bernalillo County. Another 28% are licensed in Santa Fe, Dona Ana, or San Juan Counties. The remaining 30% are licensed in the remaining counties. Six counties have no licensed dentists.

The highest rate was Los Alamos County where there was just less than one licensed dentist per 1,000 residents. Seventeen counties have a rate of .25 or less.

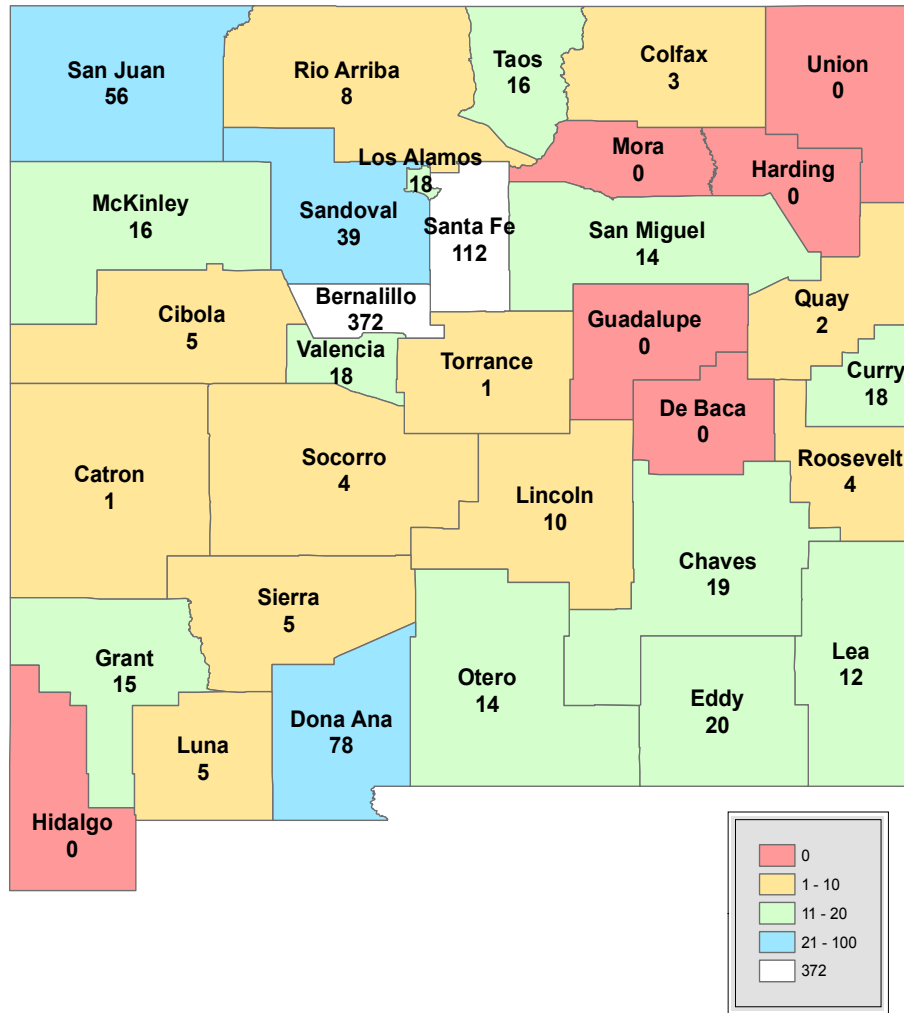
**Figure 25. New Mexico Licensed Dentists  
by County - 2007<sup>1 2</sup>**

County	Population	Percent of New Mexico Population	Licensed Dentists	Percent Of Total Dentists	Dentists Per 1,000 Population
Bernalillo	629,292	31.9%	372	42%	0.59
Catron	3,431	0.2%	1	0%	0.29
Chaves	62,595	3.2%	19	2%	0.30
Cibola	27,261	1.4%	5	1%	0.18
Colfax	13,216	0.7%	3	0%	0.23
Curry	45,328	2.3%	18	2%	0.40
De Baca	1,916	0.1%	0	0%	0.0
Dona Ana	198,791	10.1%	78	9%	0.39
Eddy	51,002	2.6%	20	2%	0.39
Grant	29,699	1.5%	15	2%	0.51
Guadalupe	4,447	0.2%	0	0%	0.0
Harding	716	0.0%	0	0%	0.0
Hidalgo	4,945	0.3%	0	0%	0.0
Lea	58,043	2.9%	12	1%	0.21
Lincoln	20,783	1.1%	10	1%	0.48
Los Alamos	18,558	0.9%	18	2%	0.97
Luna	26,996	1.4%	5	1%	0.19
McKinley	70,059	3.6%	16	2%	0.23
Mora	5,069	0.3%	0	0%	0.0
Otero	63,129	3.2%	14	2%	0.22
Quay	8,971	0.5%	2	0%	0.22
Rio Arriba	40,827	2.1%	8	1%	0.20
Roosevelt	19,142	1.0%	4	0%	0.21
Sandoval	117,866	6.0%	39	4%	0.33
San Juan	122,427	6.2%	56	6%	0.46
San Miguel	28,655	1.5%	14	2%	0.49
Santa Fe	142,955	7.3%	112	13%	0.78
Sierra	12,316	0.6%	5	1%	0.41
Socorro	18,118	0.9%	4	0%	0.22
Taos	31,608	1.6%	16	2%	0.51
Torrance	16,598	0.8%	1	0%	0.06
Union	3,792	0.2%	0	0%	0.0
Valencia	71,364	3.6%	18	2%	0.25
<b>Total</b>	<b>1,969,915</b>	<b>100%</b>	<b>885</b>	<b>100%</b>	<b>0.45</b>

1 U.S. Census Bureau. (July 1, 2007.). *2007 Population Estimates*. Retrieved October 3, 2008 from [http://factfinder.census.gov/servlet/GCTTable?\\_bm=y&-geo\\_id=04000US35&-\\_box\\_head\\_nbr=GCT-T1&-ds\\_name=PEP\\_2007\\_EST&-\\_lang=en&-mt\\_name=PEP\\_2007\\_EST\\_GCTT1\\_ST2&-format=ST-2&-\\_sse=on](http://factfinder.census.gov/servlet/GCTTable?_bm=y&-geo_id=04000US35&-_box_head_nbr=GCT-T1&-ds_name=PEP_2007_EST&-_lang=en&-mt_name=PEP_2007_EST_GCTT1_ST2&-format=ST-2&-_sse=on)

2 New Mexico Regulation and Licensing Department (September 2008). *Internal Data Run*.

### Map 8. Distribution of New Mexico Licensed Dentists by County<sup>1</sup>



\*Number represents all licensed dentists in each county. Licensed dentists may not currently be practicing, or may be practicing in another county.

<sup>1</sup> New Mexico Regulation and Licensing Department (September 2008). *Internal Data Run.*

## THE DENTAL HYGIENISTS WORKFORCE

The U.S. Bureau of Labor Statistics (BLS) reported that dental hygienists held approximately 167,000 jobs in the United States in 2006. Because it is common for a dental hygienist to hold more than one job, the number of jobs exceeds the number of hygienists. More than half of all dental hygienists worked less than 35 hours a week per job, and flexible work schedules are a common feature of this work. There were approximately 93 dental hygienists for every 100 dentists nationally, and 55.4 dental hygienists per 100,000 United States residents. According to the BLS, anticipated job growth through 2016 is 30%. This increase is because of population growth, an aging population with older people retaining more teeth, and the growing popularity of preventive dental care. Because of the increase in the number of patients seeking dental care, it is anticipated that dental hygienists will perform services which have previously been performed by dentists. As dentists' workloads increase, they are more likely to hire more hygienists so that they may devote more time to the more complex procedures.<sup>1</sup>

There were 286 dental hygiene programs accredited by the Commission on Dental Accreditation in 2006. While most of these programs offer an associate degree, some offer a certificate, a bachelor's degree, or a master's degree. With the exception of Alabama, other states and the District of Columbia require that a hygienist have an associate degree or certificate to practice in a dental office. A bachelor's or master's degree is required to practice in most public or school health programs.

In addition to graduation from an accredited school, hygienists must also be licensed by the state in which they practice. In New Mexico to become licensed by examination an applicant must have graduated from an accredited two year academic program, passed the Dental Hygiene National Board Examination, passed the Western Regional Examining Board (WREB) or the Central Regional Dental Testing Service (CRDTS) Examination, and passed the jurisprudence exam with a score of at least 75 percentile.<sup>2</sup>

New Mexico based dental hygiene programs are:<sup>3</sup>

- Doña Ana Community College
- Eastern New Mexico University – Roswell Campus
- Luna Community College
- Pima Medical Institute (PMI)
- San Juan College
- Santa Fe Community College
- University of New Mexico - (Bachelor of Science, and Master of Science)

<sup>1</sup> Bureau of Labor Statistics (nd), *Occupational Outlook Handbook, 2008-2009 Edition, Dental Hygienists*. Retrieved October 1, 2008 from <http://www.bls.gov/oco/ocos097.htm>

<sup>2</sup> New Mexico Register (June 30, 2008). Amendment to 16.5.19 NMAC Sections 8 and 9, effective 07-17-08. Retrieved October 11, 2008 from <http://www.nmcpr.state.nm.us/nmregister/xix/xix12/16.5.19amend.pdf>

<sup>3</sup> EdRef College Search Directory (nd). *Dental Laboratory and Dental Hygienist Schools in New Mexico*. Retrieved October 21, 2008 from <http://www.edref.com/college-degrees/health-care/dental-laboratory-and-dental-hygienist/new-mexico>

## The Dental Hygienists Workforce in New Mexico

Of the 832 licensed dental hygienists in New Mexico, 47% resided in Bernalillo County in 2007. Six counties (Union, Roosevelt, Mora, Hidalgo, Harding, and Catron) have no licensed dental hygienists. Three counties (Bernalillo, De Baca, and Valencia) have more than .50 licensed dental hygienists for each 1,000 county residents.

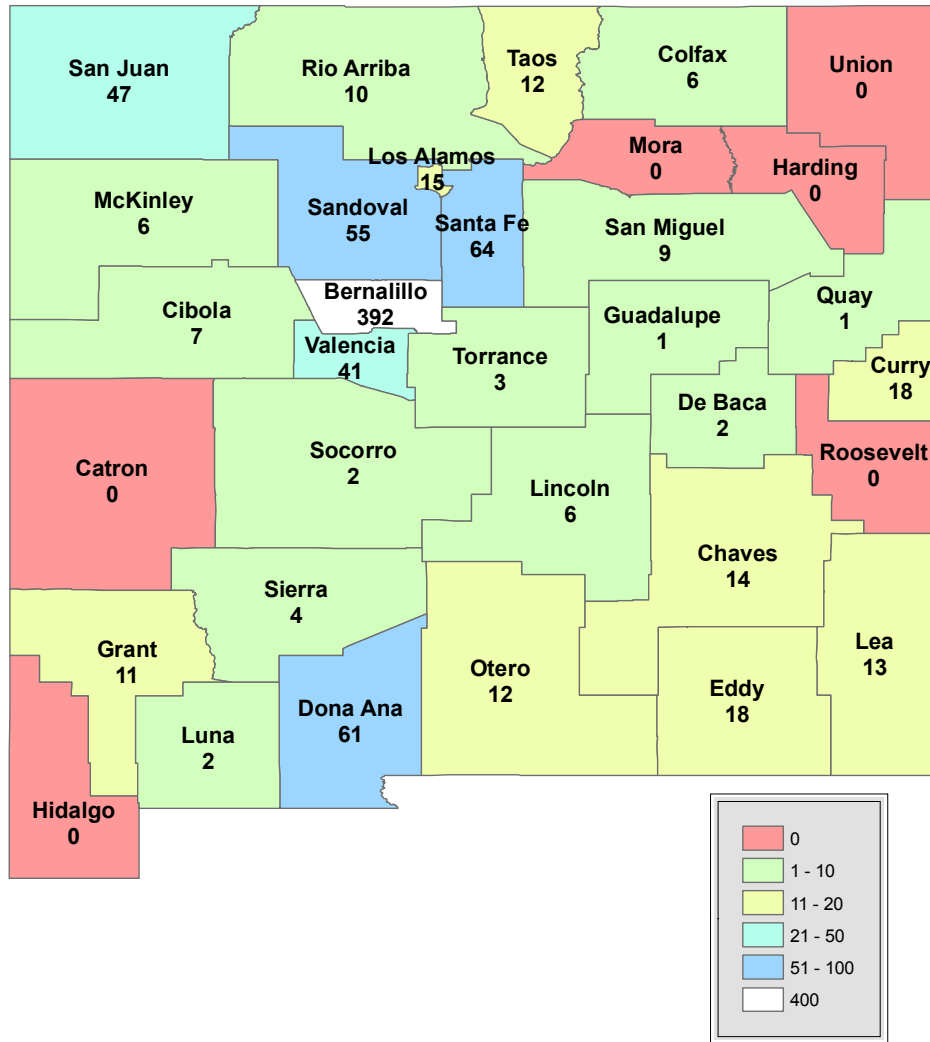
**Figure 26. Licensed Dental Hygienists by County - 2007<sup>1 2</sup>**

County	Population	Percent of Population	Licensed Dental Hygienists	Percent of Dental Hygienists	Rate Per 1,000 Population
Bernalillo	629,292	31.9%	392	47%	0.62
Catron	3,431	0.2%	0	0%	0.00
Chaves	62,595	3.2%	14	2%	0.22
Cibola	27,261	1.4%	7	1%	0.26
Colfax	13,216	0.7%	6	1%	0.45
Curry	45,328	2.3%	18	2%	0.40
De Baca	1,916	0.1%	2	0%	1.04
Dona Ana	198,791	10.1%	61	7%	0.31
Eddy	51,002	2.6%	18	2%	0.35
Grant	29,699	1.5%	11	1%	0.37
Guadalupe	4,447	0.2%	1	0%	0.22
Harding	716	0.0%	0	0%	0.00
Hidalgo	4,945	0.3%	0	0%	0.00
Lea	58,043	2.9%	13	2%	0.22
Lincoln	20,783	1.1%	6	1%	0.29
Los Alamos	18,558	0.9%	15	2%	0.81
Luna	26,996	1.4%	2	0%	0.07
McKinley	70,059	3.6%	6	1%	0.09
Mora	5,069	0.3%	0	0%	0.00
Otero	63,129	3.2%	12	1%	0.19
Quay	8,971	0.5%	1	0%	0.11
Rio Arriba	40,827	2.1%	10	1%	0.24
Roosevelt	19,142	1.0%	0	0%	0.00
Sandoval	117,866	6.0%	55	7%	0.47
San Juan	122,427	6.2%	47	6%	0.38
San Miguel	28,655	1.5%	9	1%	0.31
Santa Fe	142,955	7.3%	64	8%	0.45
Sierra	12,316	0.6%	4	0%	0.32
Socorro	18,118	0.9%	2	0%	0.11
Taos	31,608	1.6%	12	1%	0.38
Torrance	16,598	0.8%	3	0%	0.18
Union	3,792	0.2%	0	0%	0.00
Valencia	71,364	3.6%	41	5%	0.57
<b>TOTAL</b>	<b>1,969,915</b>	<b>100%</b>	<b>832</b>	<b>100%</b>	<b>0.42</b>

1 U.S. Census Bureau. (July 1, 2007.). *2007 Population Estimates*. Retrieved October 3, 2008 from [http://factfinder.census.gov/servlet/GCTTable?\\_bm=y&-geo\\_id=01000US&-\\_box\\_head\\_nbr=GCT-T1&-ds\\_name=PEP\\_2007\\_EST&-\\_lang=en&-redoLog=false&-mt\\_name=PEP\\_2007\\_EST\\_GCTT1\\_ST2&-format=US-9&-\\_sse=on](http://factfinder.census.gov/servlet/GCTTable?_bm=y&-geo_id=01000US&-_box_head_nbr=GCT-T1&-ds_name=PEP_2007_EST&-_lang=en&-redoLog=false&-mt_name=PEP_2007_EST_GCTT1_ST2&-format=US-9&-_sse=on)

2 New Mexico Regulation and Licensing Department (September 2008). *Internal Data Run*

### Map 9. Distribution of New Mexico Licensed Dental Hygienists by County<sup>1</sup>



\*Number represents all licensed dental hygienists in each county. Licensed dental hygienists may not currently be practicing, or may be practicing in another county.

<sup>1</sup> New Mexico Regulation and Licensing Department (September 2008). *Internal Data Run.*

## The Dental Assistant Workforce<sup>1</sup>

According to the U.S. Bureau of Labor Statistics (BLS), dental assistants held about 280,000 jobs in the United States in 2006. Almost all of these jobs were in dentist offices. Approximately 35% of the jobs were part time. BLS has projected that demand for dental assistants will increase by 29% over the next decade.

While many dental assistants learn through on-the-job training, the American Dental Association has approved 269 training programs in this field. Most of these programs are one-year in length. Two year programs offered through some community colleges end with an associate's degree.

Many states require certification which involves passages of written and/or practical tests. In New Mexico there are no education or training requirements to become an entry level dental assistant. In this capacity, a dental assistant may perform "basic supportive dental procedures under the direct supervision of a licensed dentist."<sup>2</sup> However to become certified to perform expanded functions an individual must complete training which has been approved by the Dental Assisting National Board (DANB) and pass both written, and applied exams. Expanded functions include applying topical fluoride, applying pit and fissure sealants, perform rubber cup coronal polishing, operate dental x-ray equipment, and perform dental radiologic procedures.<sup>3</sup>

---

1 Bureau of Labor Statistics (nd), *Occupational Outlook Handbook, 2008-2009 Edition, Dental Hygienists*. Retrieved October 1, 2008 from <http://www.bls.gov/oco/ocos097.htm>

2 Dental Assisting National Board (nd). *Home Page*. Retrieved October 18, 2008 from <http://www.danb.org>

3 New Mexico Regulation and Licensing Department (nd). *Dental Assistants Requirements for Certification*. Retrieved October 18, 2008 from <http://www/nmcp.state.nm.us/nmac/parts/title16/16.005.0033.htm>

## Certified Dental Assistants in New Mexico by County

Of the 1,582 certified dental assistants in New Mexico, 41% resided in Bernalillo County in 2007. Three counties (Union, Hidalgo, and Harding) have no certified dental assistants. Three counties (Bernalillo, Sandoval, and San Miguel) have more than one certified dental assistant for every 1,000 county residents.

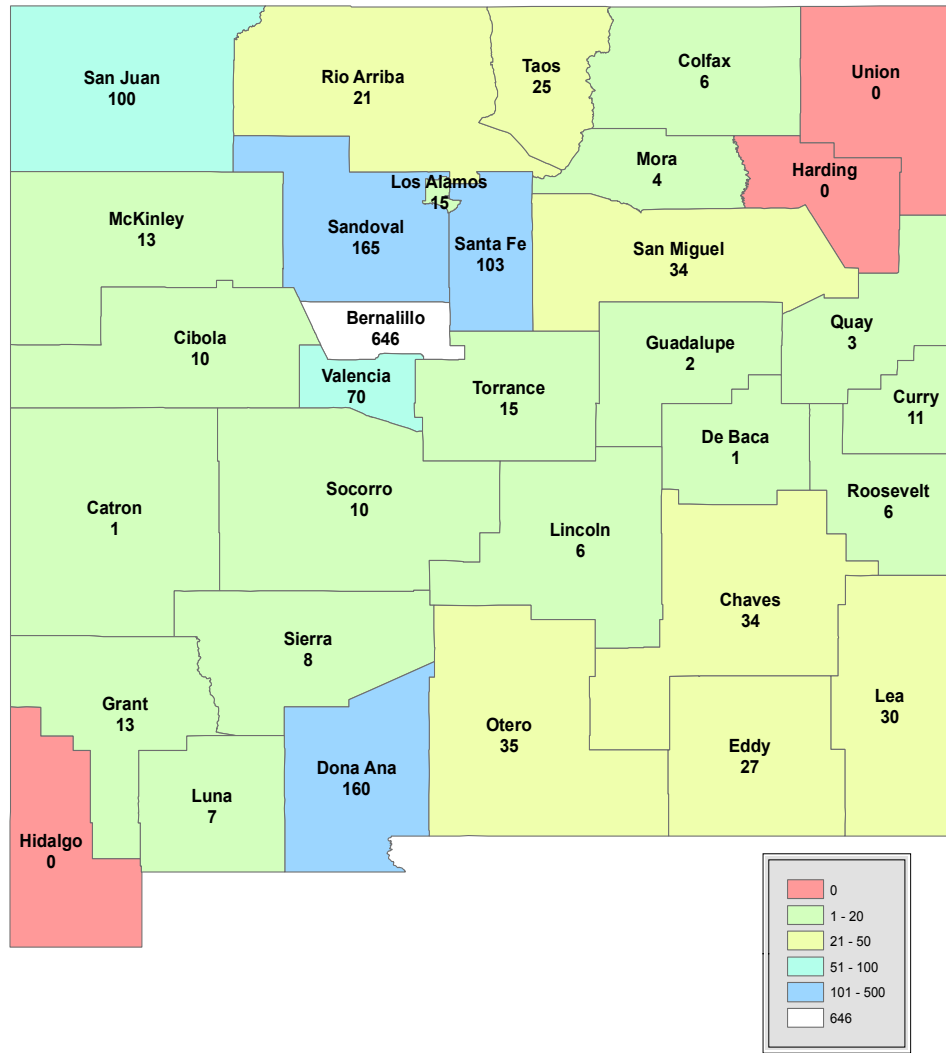
**Figure 27. Certified Dental Assistants by County - 2007<sup>1 2</sup>**

County	Population	Percent of Population	Licensed Dental Assistants	Percent of Dental Assistants	Rate Per 1,000 Population
Bernalillo	629,292	31.9%	646	41%	1.03
Catron	3,431	0.2%	1	0%	0.29
Chaves	62,595	3.2%	34	2%	0.54
Cibola	27,261	1.4%	10	1%	0.37
Colfax	13,216	0.7%	6	0%	0.45
Curry	45,328	2.3%	11	1%	0.24
De Baca	1,916	0.1%	1	0%	0.52
Dona Ana	198,791	10.1%	160	10%	0.80
Eddy	51,002	2.6%	27	2%	0.53
Grant	29,699	1.5%	13	1%	0.44
Guadalupe	4,447	0.2%	2	0%	0.45
Harding	716	0.0%	0	0%	0.00
Hidalgo	4,945	0.3%	0	0%	0.00
Lea	58,043	2.9%	30	2%	0.52
Lincoln	20,783	1.1%	6	0%	0.29
Los Alamos	18,558	0.9%	15	1%	0.81
Luna	26,996	1.4%	7	0%	0.26
McKinley	70,059	3.6%	13	1%	0.19
Mora	5,069	0.3%	4	0%	0.79
Otero	63,129	3.2%	36	2%	0.57
Quay	8,971	0.5%	3	0%	0.33
Rio Arriba	40,827	2.1%	21	1%	0.51
Roosevelt	19,142	1.0%	6	0%	0.31
Sandoval	117,866	6.0%	165	10%	1.40
San Juan	122,427	6.2%	100	6%	0.82
San Miguel	28,655	1.5%	34	2%	1.19
Santa Fe	142,955	7.3%	103	7%	0.72
Sierra	12,316	0.6%	8	1%	0.65
Socorro	18,118	0.9%	10	1%	0.55
Taos	31,608	1.6%	25	1%	0.79
Torrance	16,598	0.8%	15	1%	0.90
Union	3,792	0.2%	0	0%	0.00
Valencia	71,364	3.6%	70	4%	0.98
<b>TOTAL</b>	<b>1,969,915</b>	<b>100%</b>	<b>1,582</b>	<b>100%</b>	<b>0.80</b>

1 U.S. Census Bureau. (July 1, 2007.). *2007 Population Estimates*. Retrieved October 3, 2008 from [http://factfinder.census.gov/servlet/GCTTable?\\_bm=y&-geo\\_id=01000US&-\\_box\\_head\\_nbr=GCT-T1&-ds\\_name=PEP\\_2007\\_EST&-lang=en&-redoLog=false&-mt\\_name=PEP\\_2007\\_EST\\_GCTT1\\_ST2&-format=US-9&-\\_sse=on](http://factfinder.census.gov/servlet/GCTTable?_bm=y&-geo_id=01000US&-_box_head_nbr=GCT-T1&-ds_name=PEP_2007_EST&-lang=en&-redoLog=false&-mt_name=PEP_2007_EST_GCTT1_ST2&-format=US-9&-_sse=on)

2 New Mexico Regulation and Licensing Department (September 2008). *Internal Data Run*

### Map 10. Distribution of New Mexico Certified Dental Assistants by County - 2007<sup>1</sup>



\*Number represents all certified dental assistants in each county. Certified dental assistants may not currently be practicing, or may be practicing in another county.

<sup>1</sup> New Mexico Regulation and Licensing Department (September 2008). *Internal Data Run.*

# **PHARMACY PROFESSIONALS**



## THE PHARMACIST WORKFORCE<sup>1</sup>

Pharmacists held about 243,000 jobs in 2006. About 62 percent worked in community pharmacies that were either independently owned or part of a drugstore chain, grocery store, department store, or mass merchandiser. Most community pharmacists were salaried employees, but some were self-employed owners. About 23 percent of pharmacists worked in hospitals. A small proportion worked in mail-order and Internet pharmacies, pharmaceutical wholesalers, offices of physicians, and the Federal Government.

Employment of pharmacists is expected to grow by 22 percent between 2006 and 2016. The increasing numbers of middle-aged and elderly people will continue to spur demand for pharmacists throughout the projection period. Older people tend to use more prescription drugs than younger people. Other factors likely to increase the demand for pharmacists include scientific advances that will make more drug products available and the coverage of prescription drugs by a greater number of health insurance plans and Medicare.

As the use of prescription drugs increases, demand for pharmacists will grow in most practice settings, such as community pharmacies, hospital pharmacies, and mail-order pharmacies. As the population ages, assisted living facilities and home care organizations should see particularly rapid growth. Demand will also increase as cost conscious insurers, in an attempt to improve preventative care, use pharmacists in areas such as patient education and vaccination administration.

A license to practice pharmacy is required in all States, the District of Columbia, and all U.S. territories. To obtain a license, a prospective pharmacist must graduate from a college of pharmacy that is accredited by the Accreditation Council for Pharmaceutical Education (ACPE) and pass a series of examinations. All States and the District of Columbia require the North American Pharmacist Licensure Exam (NAPLEX), which tests pharmacy skills and knowledge. Forty-four States and the District of Columbia also require the Multistate Pharmacy Jurisprudence Exam (MPJE), which tests pharmacy law. Both exams are administered by the National Association of Boards of Pharmacy (NABP). Each of the eight States and territories that do not require the MJPE has its own pharmacy law exam. In addition to the NAPLEX and MPJE, some States and territories require additional exams that are unique to their jurisdiction.

---

<sup>1</sup> Bureau of Labor Statistics (nd), *Occupational Outlook Handbook, 2008-2009 Edition, Emergency Medical Technicians and Paramedics*. Retrieved October 13, 2008 from <http://www.bls.gov/oco/ocos079.htm>

**Figure 28. Estimated Number of Pharmacists  
Per 100,000 Residents by State – 2004\*1 2**

Rank	Location	# of Pharmacists	Population	# of Pharmacists per 100,000 Residents	Rank	Location	# of Pharmacists	Population	# of Pharmacists per 100,000 Residents
1	Nebraska	1,830	1,743,954	104.93	27	Utah	1,900	2,430,841	78.16
2	South Dakota	780	774,129	100.76	28	Mississippi	2,240	2,886,860	77.59
3	North Dakota	620	636,814	97.36	29	Washington	4,800	6,189,869	77.55
4	Alabama	4,300	4,508,540	95.37	30	Nevada	1,800	2,329,960	77.25
5	Louisiana	4,170	4,487,966	92.92		<b>UNITED STATES</b>	<b>226,160</b>	<b>293,191,511</b>	<b>77.14</b>
6	Montana	860	926,721	92.80	31	Colorado	3,530	4,609,264	76.58
7	West Virginia	1,670	1,804,618	92.54	32	Georgia	6,760	8,921,371	75.77
8	Arkansas	2,510	2,742,898	91.51	33	Massachusetts	4,850	6,433,676	75.38
9	Pennsylvania	11,300	12,348,618	91.51	34	Illinois	9,510	12,680,053	75.00
10	Wyoming	460	503,258	91.40	35	Idaho	1,040	1,391,751	74.73
11	Tennessee	5,270	5,912,063	89.14	36	District of Columbia	430	579,621	74.19
12	Indiana	5,460	6,218,863	87.80	37	New Hampshire	960	1,294,285	74.17
13	Kansas	2,390	2,730,828	87.52	38	North Carolina	6,310	8,538,378	73.90
14	New Jersey	7,380	8,641,235	85.40	39	Maine	960	1,308,892	73.34
15	Ohio	9,780	11,452,808	85.39	40	Maryland	4,000	5,537,662	72.23
16	Oklahoma	2,990	3,516,552	85.03	41	Texas	16,010	22,454,811	71.30
17	Iowa	2,470	2,946,009	83.84	42	Connecticut	2,470	3,481,890	70.94
18	Missouri	4,730	5,744,753	82.34	43	Virginia	5,250	7,464,033	70.34
19	Wisconsin	4,490	5,510,199	81.49	44	Vermont	430	618,794	69.49
20	Hawaii	1,020	1,254,172	81.33	<b>45</b>	<b>New Mexico</b>	<b>1,280</b>	<b>1,892,182</b>	<b>67.65</b>
21	Oregon	2,900	3,583,027	80.94	46	New York	13,010	19,258,479	67.55
22	Michigan	8,150	10,102,720	80.67	47	Arizona	3,830	5,744,367	66.67
23	Florida	13,900	17,342,623	80.15	48	California	23,240	35,721,991	65.06
24	Kentucky	3,300	4,139,859	79.71	49	Delaware	520	827,671	62.83
25	Minnesota	3,990	5,085,626	78.46	50	Rhode Island	660	1,072,859	61.52
26	South Carolina	3,290	4,201,437	78.31	51	Alaska	360	661,661	54.41

\*2004 is the most recent national data available on the number of pharmacists by state.

1 U.S. Census Bureau. (July 1, 2007.). *2007 Population Estimates*. Retrieved October 3, 2008 from [http://factfinder.census.gov/servlet/GCTTable?\\_bm=y&-geo\\_id=01000US&-\\_box\\_head\\_nbr=GCT-T1&-ds\\_name=PEP\\_2007\\_EST&-\\_lang=en&-redoLog=false&-mt\\_name=PEP\\_2007\\_EST\\_GCTT1\\_ST2&-format=US-9&-\\_sse=on](http://factfinder.census.gov/servlet/GCTTable?_bm=y&-geo_id=01000US&-_box_head_nbr=GCT-T1&-ds_name=PEP_2007_EST&-_lang=en&-redoLog=false&-mt_name=PEP_2007_EST_GCTT1_ST2&-format=US-9&-_sse=on)

2 The New York Center for Health Workforce Studies. (October 2006). *The United States Health Workforce Profile*. 124

## Licensed Pharmacists Workforce in New Mexico by County

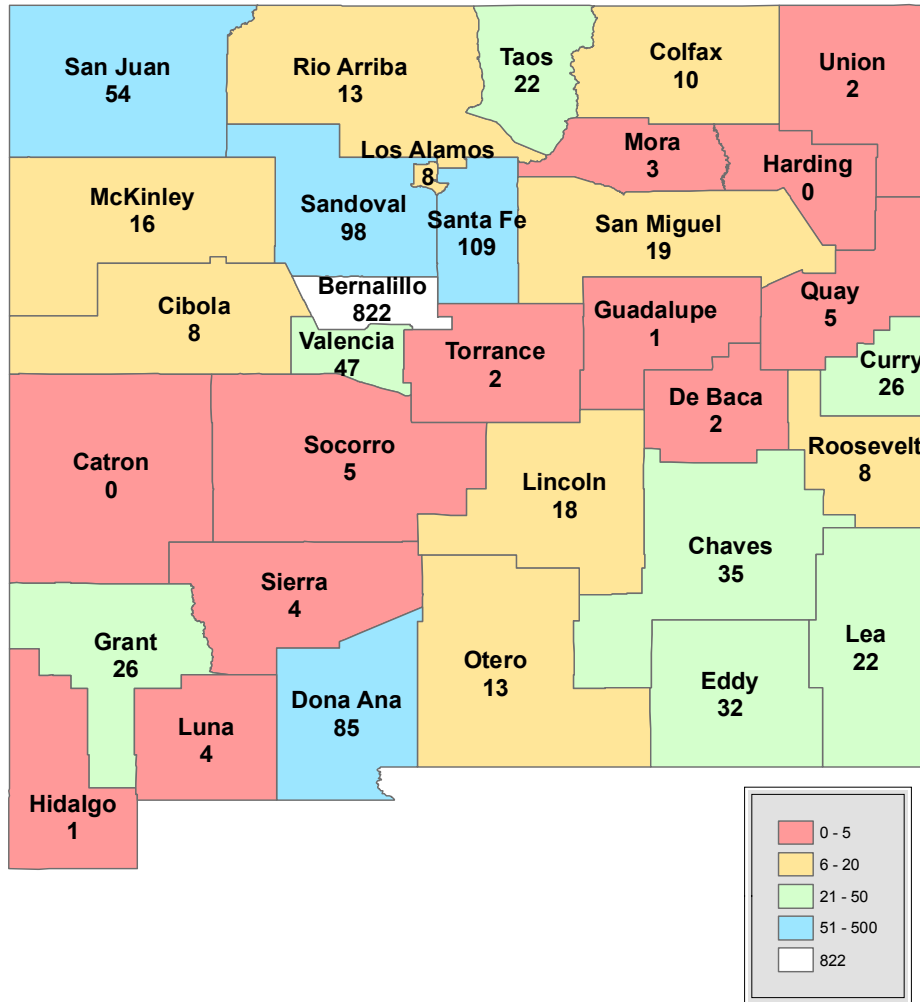
In 2007, New Mexico had a total of 1,520 licensed pharmacists. This represents an increase of 2% over the 1,486 licensed pharmacists in 2006. The rate of pharmacists per 1,000 residents ranged from a high of 1.31 in Bernalillo, to a low of zero in Catron and Harding counties. More than 54% were licensed with a Bernalillo County address.

**Figure 29. New Mexico Licensed Pharmacists by County - 2007<sup>1</sup>**

County	Population	Percent of Population	Licensed Pharmacist Clinicians	% Total Pharmacist Clinicians	Rate Per 1,000 Population
Bernalillo	629,292	31.9%	822	54%	1.31
Catron	3,431	0.2%	0	0%	0.00
Chaves	62,595	3.2%	35	2%	0.56
Cibola	27,261	1.4%	8	1%	0.29
Colfax	13,216	0.7%	10	1%	0.76
Curry	45,328	2.3%	26	2%	0.57
De Baca	1,916	0.1%	2	0%	1.04
Dona Ana	198,791	10.1%	85	6%	0.43
Eddy	51,002	2.6%	32	2%	0.63
Grant	29,699	1.5%	26	2%	0.88
Guadalupe	4,447	0.2%	1	0%	0.22
Harding	716	0.0%	0	0%	0.00
Hidalgo	4,945	0.3%	1	0%	0.20
Lea	58,043	2.9%	22	1%	0.38
Lincoln	20,783	1.1%	18	1%	0.87
Los Alamos	18,558	0.9%	8	1%	0.43
Luna	26,996	1.4%	4	0%	0.15
McKinley	70,059	3.6%	16	1%	0.23
Mora	5,069	0.3%	3	0%	0.59
Otero	63,129	3.2%	13	1%	0.21
Quay	8,971	0.5%	5	0%	0.56
Rio Arriba	40,827	2.1%	13	1%	0.32
Roosevelt	19,142	1.0%	8	1%	0.42
Sandoval	117,866	6.0%	98	6%	0.83
San Juan	122,427	6.2%	54	4%	0.44
San Miguel	28,655	1.5%	19	1%	0.66
Santa Fe	142,955	7.3%	109	7%	0.76
Sierra	12,316	0.6%	4	0%	0.32
Socorro	18,118	0.9%	5	0%	0.28
Taos	31,608	1.6%	22	1%	0.70
Torrance	16,598	0.8%	2	0%	0.12
Union	3,792	0.2%	2	0%	0.53
Valencia	71,364	3.6%	47	3%	0.66
<b>Total</b>	<b>1,969,915</b>	<b>100%</b>	<b>1,520</b>	<b>100%</b>	<b>0.77</b>

<sup>1</sup> New Mexico Regulation and Licensing Department (September 2008). *Internal Data Run.*

### Map 11. Distribution of New Mexico Licensed Pharmacists by County<sup>1</sup>



\*Number represents all licensed pharmacists in each county. Licensed pharmacists may not currently be practicing, or may be practicing in another county.

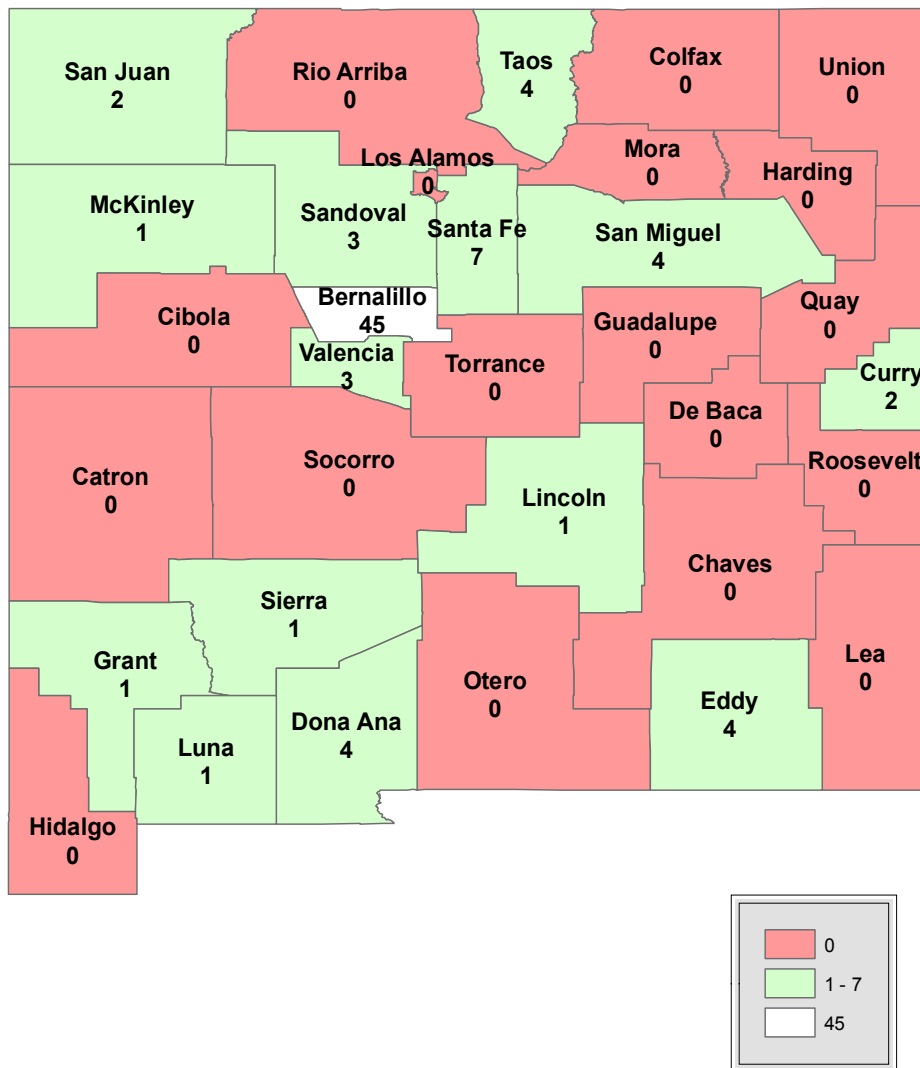
<sup>1</sup> New Mexico Regulation and Licensing Department (September 2008). *Internal Data Run.*

## Licensed Pharmacist Clinicians Workforce in New Mexico

Clinical pharmacists are advanced practice pharmacists that have an additional 60 hours of training in physical assessment and 150 hours of clinical experience under the supervision of a physician. Under a supervising physician, they can write prescriptions and can practice in a doctor’s office, hospital, health center, or in a pharmacy.

In 2007, there were 83 licensed pharmacist clinicians. Slightly more than 54% of them were licensed with a Bernalillo address. Fifteen counties had at least one clinical pharmacist.

**Map 12. Distribution of New Mexico Licensed Pharmacist Clinicians by County <sup>1</sup>**



\*Number represents all licensed pharmacist clinicians in each county. Licensed pharmacist clinicians may not currently be practicing, or may be practicing in another county.

<sup>1</sup> New Mexico Regulation and Licensing Department (September 2008). *Internal Data Run.*

**Figure 30. New Mexico Licensed Pharmacist Clinicians by County - 2007<sup>1 2</sup>**

County	Population	Percent of Population	Licensed Pharmacist Clinicians	% Total Pharmacist Clinicians	Rate Per 1,000 Population
Bernalillo	629,292	31.9%	45	54%	0.07
Catron	3,431	0.2%	0	0%	0.00
Chaves	62,595	3.2%	0	0%	0.00
Cibola	27,261	1.4%	0	0%	0.00
Colfax	13,216	0.7%	0	0%	0.00
Curry	45,328	2.3%	2	2%	0.04
De Baca	1,916	0.1%	0	0%	0.00
Dona Ana	198,791	10.1%	4	5%	0.02
Eddy	51,002	2.6%	4	5%	0.08
Grant	29,699	1.5%	1	1%	0.03
Guadalupe	4,447	0.2%	0	0%	0.00
Harding	716	0.0%	0	0%	0.00
Hidalgo	4,945	0.3%	0	0%	0.00
Lea	58,043	2.9%	0	0%	0.00
Lincoln	20,783	1.1%	1	1%	0.05
Los Alamos	18,558	0.9%	0	0%	0.00
Luna	26,996	1.4%	1	1%	0.04
McKinley	70,059	3.6%	1	1%	0.01
Mora	5,069	0.3%	0	0%	0.00
Otero	63,129	3.2%	0	0%	0.00
Quay	8,971	0.5%	0	0%	0.00
Rio Arriba	40,827	2.1%	0	0%	0.00
Roosevelt	19,142	1.0%	0	0%	0.00
Sandoval	117,866	6.0%	3	4%	0.03
San Juan	122,427	6.2%	2	2%	0.02
San Miguel	28,655	1.5%	4	5%	0.14
Santa Fe	142,955	7.3%	7	8%	0.05
Sierra	12,316	0.6%	1	1%	0.08
Socorro	18,118	0.9%	0	0%	0.00
Taos	31,608	1.6%	4	5%	0.13
Torrance	16,598	0.8%	0	0%	0.00
Union	3,792	0.2%	0	0%	0.00
Valencia	71,364	3.6%	3	4%	0.04
<b>Total</b>	<b>1,969,915</b>	<b>100%</b>	<b>83</b>	<b>100%</b>	<b>0.04</b>

1 U.S. Census Bureau. (July 1, 2007.). *2007 Population Estimates*. Retrieved October 3, 2008 from [http://factfinder.census.gov/servlet/GCTTable?\\_bm=y&-geo\\_id=04000US35&-\\_box\\_head\\_nbr=GCT-T1&-ds\\_name=PEP\\_2007\\_EST&-\\_lang=en&-mt\\_name=PEP\\_2007\\_EST\\_GCTT1\\_ST2&-format=ST-2&-\\_sse=on](http://factfinder.census.gov/servlet/GCTTable?_bm=y&-geo_id=04000US35&-_box_head_nbr=GCT-T1&-ds_name=PEP_2007_EST&-_lang=en&-mt_name=PEP_2007_EST_GCTT1_ST2&-format=ST-2&-_sse=on)

2 New Mexico Regulation and Licensing Department (September 2008). *Internal Data Run*.

Pharmacy technicians help licensed Pharmacists provide medication and other health care products to patients. Technicians usually perform routine tasks to help prepare prescribed medication, such as counting tablets and labeling bottles. They also perform administrative duties, such as answering phones, stocking shelves, and operating cash registers.

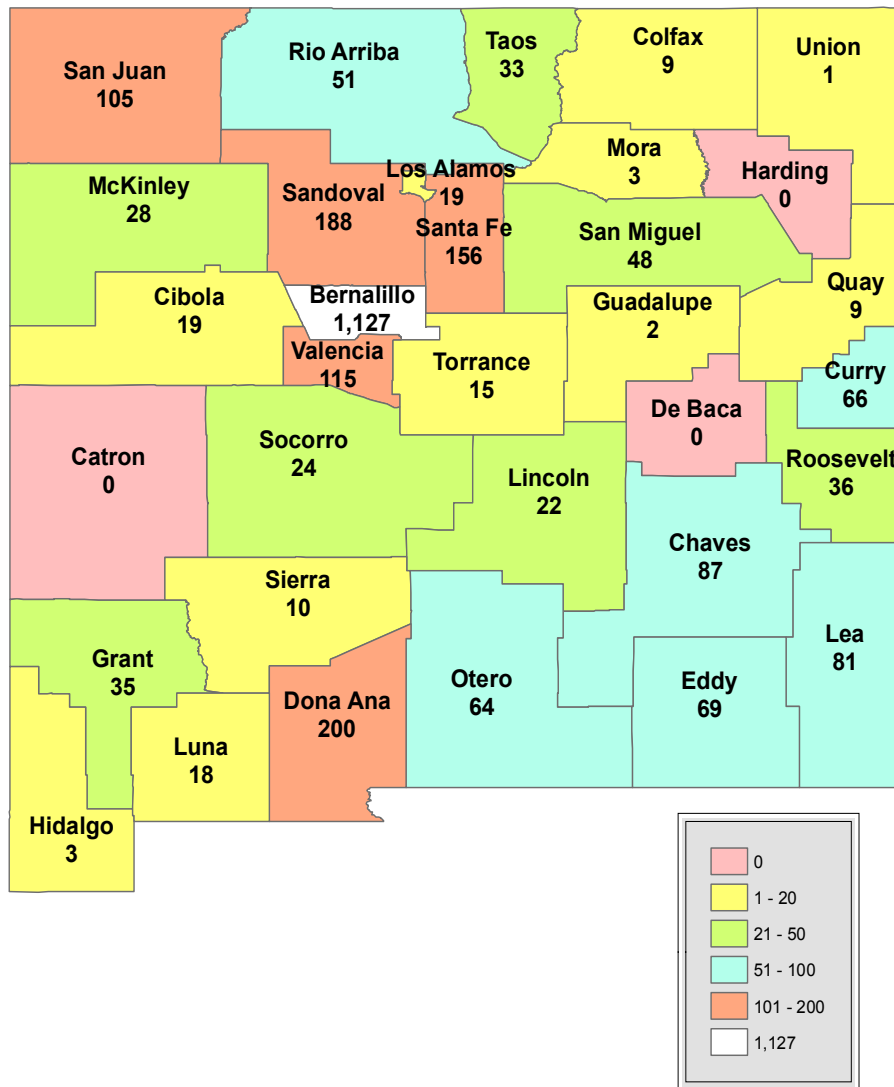
**Figure 31. Licensed Pharmacist Technicians in New Mexico by County - 2007<sup>1 2</sup>**

County	Population	Percent of Population	Licensed Pharmacist Technicians	% Total Pharmacist Technicians	Rate Per 1,000 Population
Bernalillo	629,292	31.9%	1,127	43%	1.79
Catron	3,431	0.2%	0	0%	0.00
Chaves	62,595	3.2%	87	3%	1.39
Cibola	27,261	1.4%	19	1%	0.70
Colfax	13,216	0.7%	9	0%	0.68
Curry	45,328	2.3%	66	2%	1.46
De Baca	1,916	0.1%	0	0%	0.00
Dona Ana	198,791	10.1%	200	8%	1.01
Eddy	51,002	2.6%	69	3%	1.35
Grant	29,699	1.5%	35	1%	1.18
Guadalupe	4,447	0.2%	2	0%	0.45
Harding	716	0.0%	0	0%	0.00
Hidalgo	4,945	0.3%	3	0%	0.61
Lea	58,043	2.9%	81	3%	1.40
Lincoln	20,783	1.1%	22	1%	1.06
Los Alamos	18,558	0.9%	19	1%	1.02
Luna	26,996	1.4%	18	1%	0.67
McKinley	70,059	3.6%	28	1%	0.40
Mora	5,069	0.3%	3	0%	0.59
Otero	63,129	3.2%	64	2%	1.01
Quay	8,971	0.5%	9	0%	1.00
Rio Arriba	40,827	2.1%	51	2%	1.25
Roosevelt	19,142	1.0%	36	1%	1.88
Sandoval	117,866	6.0%	188	7%	1.60
San Juan	122,427	6.2%	105	4%	0.86
San Miguel	28,655	1.5%	48	2%	1.68
Santa Fe	142,955	7.3%	156	6%	1.09
Sierra	12,316	0.6%	10	0%	0.81
Socorro	18,118	0.9%	24	1%	1.32
Taos	31,608	1.6%	33	1%	1.04
Torrance	16,598	0.8%	15	1%	0.90
Union	3,792	0.2%	1	0%	0.26
Valencia	71,364	3.6%	115	4%	1.61
<b>Total</b>	<b>1,969,915</b>	<b>100%</b>	<b>2,643</b>	<b>100%</b>	<b>1.34</b>

1 U.S. Census Bureau. (July 1, 2007.). *2007 Population Estimates*. Retrieved October 3, 2008 from [http://factfinder.census.gov/servlet/GCTTable?\\_bm=y&-geo\\_id=04000US35&-\\_box\\_head\\_nbr=GCT-T1&-ds\\_name=PEP\\_2007\\_EST&-\\_lang=en&-mt\\_name=PEP\\_2007\\_EST\\_GCTT1\\_ST2&-format=ST-2&-sse=on](http://factfinder.census.gov/servlet/GCTTable?_bm=y&-geo_id=04000US35&-_box_head_nbr=GCT-T1&-ds_name=PEP_2007_EST&-_lang=en&-mt_name=PEP_2007_EST_GCTT1_ST2&-format=ST-2&-sse=on)

2 New Mexico Regulation and Licensing Department (September 2008). *Internal Data Run*.

### Map 13. Distribution of New Mexico Licensed Pharmacist Technicians by County <sup>1</sup>



\*Number represents all licensed pharmacists technicians in each county. Licensed pharmacists technicians may not currently be practicing, or may be practicing in another county.

<sup>1</sup> New Mexico Regulation and Licensing Department (September 2008). *Internal Data Run.*



# **EMERGENCY MEDICAL SERVICE PROFESSIONALS**



## THE EMERGENCY MEDICAL TECHNICIAN AND PARAMEDIC WORKFORCE<sup>1</sup>

The U.S. Bureau of Labor Statistics (BLS) reported that emergency medical technicians (EMT) and paramedics held about 201,000 jobs in the United States in 2006.

Approximately 40% worked for private ambulance services, 30% for fire departments, public ambulance services, or emergency medical services, and, 20% were employed full time in hospitals to care for patients during transport.

In the United States, the licensing of EMTs are governed by state statute. Therefore, education requirements, and scope of practice of EMTs varies from state to state. Primary management and regulation of EMTs is also managed at the state level, the federal government does have minimum requirements for EMT-Basics and EMT-Paramedics set through the National Highway Traffic Safety Administration (NHTSA). EMTs and paramedics are certified by the National Registry of Emergency Medical Technicians (NREMT). The four levels of certification are:

- EMS First Responder – This is limited medical training that is often directed at people who are most likely to be among the first people at the site of an accident (i.e., police, firefighters, sheriffs deputies etc.).
- EMT-Basic - People at this level are trained to care for patients at the scene of an accident and while transporting patients by ambulance to the hospital.
- EMT-Intermediate – Students at this level learn advanced skills. There are two classifications (Intermediate 1985 and Intermediate 1999) which require between 30 to 350 hours of training to obtain. Requirements vary by State.
- EMT-Paramedic – The most advanced level of training, it is often offered over a 1 to two year period in community college or technical schools. Training focuses on anatomy, physiology, and advanced medical skills.

---

<sup>1</sup> Bureau of Labor Statistics (nd), *Occupational Outlook Handbook, 2008-2009 Edition, Emergency Medical Technicians and Paramedics*. Retrieved October 3, 2008 from <http://www.bls.gov/oco/ocos101.htm>

## The Emergency Medical Technician and Paramedic Workforce in New Mexico<sup>1</sup>

The New Mexico Department of Health, Emergency Medical Services Bureau is responsible for certifying EMTs and paramedics. New Mexico utilizes curriculum guided by the requirements of the NHTSA and utilized the NREMT for certification exams.

Of the 4,782 EMTs or paramedics certified in New Mexico, 58.7% are EMT-Basic, 25.1% are EMT-Intermediate, and 16.2% are paramedics. As displayed in Figure 32 and 33 on the following pages, Bernalillo County has the highest percentage of EMTs and paramedics. Every county in the State has at least one EMT, and all but four counties have at least one paramedic.

There are 657 EMS-First Responders in New Mexico. With 93, San Juan County has the highest number of First Responders. Catron County has the largest number of First Responders per 1,000 residents and Bernalillo has the least. There is a tendency for small population counties to have a higher rate of First Responders per 1,000 residents than those counties with larger populations.

---

<sup>1</sup> New Mexico Department of Health, Emergency Medical Services Bureau (September 2008). *Internal Data Run*.

**Figure 32. Certified First Responders, Emergency Medical Technicians – Basic in New Mexico by County<sup>1 2</sup>**

County	Population	% of Population	# EMS-First Responder	% EMS-1 <sup>st</sup> Responder	Rate per 1,000 pop.	# of EMT-Basic	% of EMT-Basic	Rate per 1,000 pop.
Bernalillo	629,292	31.9%	21	3%	0.03	1,030	37%	1.64
Catron	3,431	0.2%	25	4%	7.29	31	1%	9.04
Chaves	62,595	3.2%	8	1%	0.13	55	2%	0.88
Cibola	27,261	1.4%	24	4%	0.88	36	1%	1.32
Colfax	13,216	0.7%	16	2%	1.21	31	1%	2.35
Curry	45,328	2.3%	3	0%	0.07	27	1%	0.6
De Baca	1,916	0.1%	7	1%	3.65	5	0%	2.61
Dona Ana	198,791	10.1%	30	5%	0.15	187	7%	0.94
Eddy	51,002	2.6%	24	4%	0.47	55	2%	1.08
Grant	29,699	1.5%	74	11%	2.49	39	1%	1.31
Guadalupe	4,447	0.2%	5	1%	1.12	9	0%	2.02
Harding	716	0.0%	3	0%	4.19	5	0%	6.98
Hidalgo	4,945	0.3%	5	1%	1.01	10	0%	2.02
Lea	58,043	2.9%	0	0%	0	33	1%	0.57
Lincoln	20,783	1.1%	7	1%	0.34	52	2%	2.5
Los Alamos	18,558	0.9%	4	1%	0.22	37	1%	1.99
Luna	26,996	1.4%	7	1%	0.26	15	1%	0.56
McKinley	70,059	3.6%	48	7%	0.69	75	3%	1.07
Mora	5,069	0.3%	3	0%	0.59	4	0%	0.79
Otero	63,129	3.2%	29	4%	0.46	52	2%	0.82
Quay	8,971	0.5%	25	4%	2.79	21	1%	2.34
Rio Arriba	40,827	2.1%	39	6%	0.96	58	2%	1.42
Roosevelt	19,142	1.0%	0	0%	0	27	1%	1.41
San Juan	117,866	6.0%	93	14%	0.79	170	6%	1.44
San Miguel	122,427	6.2%	13	2%	0.11	36	1%	0.29
Sandoval	28,655	1.5%	39	6%	1.36	219	8%	7.64
Santa Fe	142,955	7.3%	18	3%	0.13	216	8%	1.51
Sierra	12,316	0.6%	8	1%	0.65	9	0%	0.73
Socorro	18,118	0.9%	15	2%	0.83	23	1%	1.27
Taos	31,608	1.6%	18	3%	0.57	74	1%	2.34
Torrance	16,598	0.8%	5	1%	0.3	29	1%	1.75
Union	3,792	0.2%	7	1%	1.85	17	1%	4.48
Valencia	71,364	3.6%	34	5%	0.48	119	4%	1.67
<b>TOTAL</b>	<b>1,969,915</b>	<b>100%</b>	<b>657</b>	<b>100%</b>	<b>0.33</b>	<b>2,806</b>	<b>100%</b>	<b>1.42</b>

1 New Mexico Department of Health, Emergency Medical Services Bureau (September 2008). *Internal Data Run*

2 U.S. Census Bureau. (July 1, 2007.). *2007 Population Estimates*. Retrieved October 3, 2008 from [http://factfinder.census.gov/servlet/GCTTable?\\_bm=y&-geo\\_id=01000US&-\\_box\\_head\\_nbr=GCT-T1&-ds\\_name=PEP\\_2007\\_EST&-\\_lang=en&-redoLog=false&-mt\\_name=PEP\\_2007\\_EST\\_GCTT1\\_ST2&-format=US-9&-\\_sse=on](http://factfinder.census.gov/servlet/GCTTable?_bm=y&-geo_id=01000US&-_box_head_nbr=GCT-T1&-ds_name=PEP_2007_EST&-_lang=en&-redoLog=false&-mt_name=PEP_2007_EST_GCTT1_ST2&-format=US-9&-_sse=on)

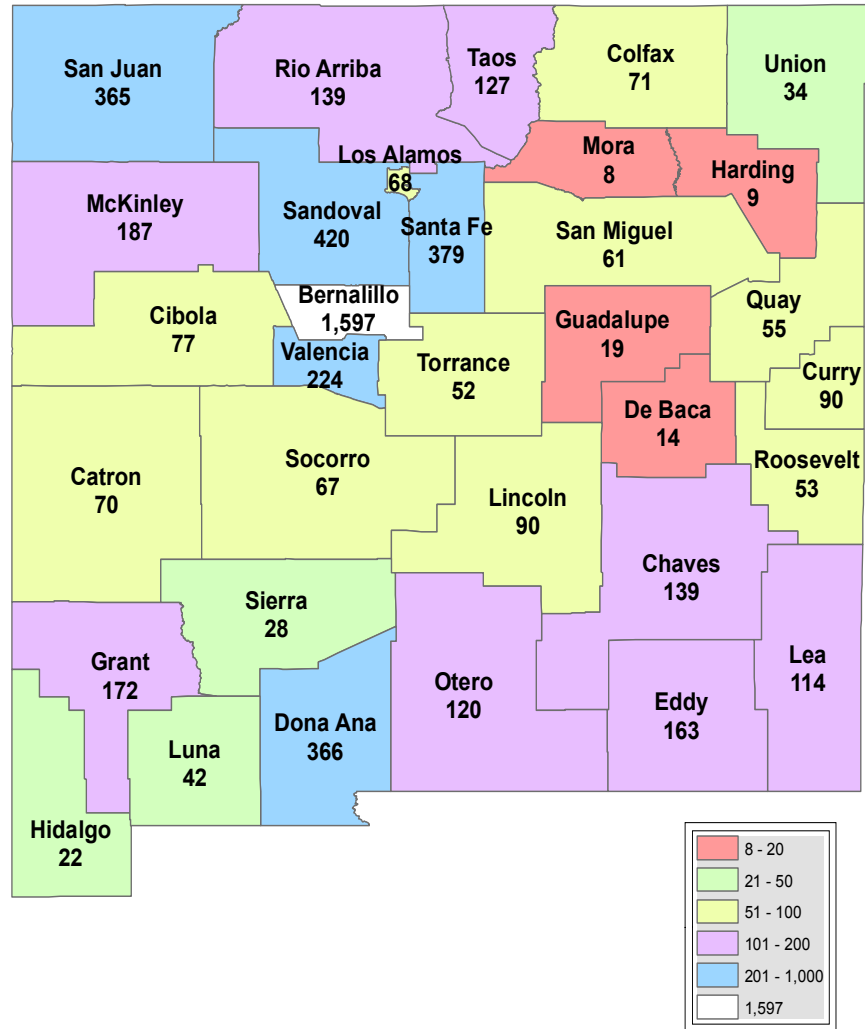
**Figures 33. Certified Emergency Medical Technicians - Intermediate and Paramedics in New Mexico by County<sup>1 2</sup>**

County	Population	% of Population	# of EMT-Intermediate	% of EMT-Intermediate	Rate per 1,000 pop.	# of Paramedics	% of Paramedics	Rate per 1,000 pop.
Bernalillo	629,292	31.9%	244	20%	0.39	302	39%	0.48
Catron	3,431	0.2%	14	1%	4.08	0	0%	0
Chaves	62,595	3.2%	51	4%	0.81	25	3%	0.4
Cibola	27,261	1.4%	11	1%	0.4	6	1%	0.22
Colfax	13,216	0.7%	17	1%	1.29	7	1%	0.53
Curry	45,328	2.3%	43	4%	0.95	16	2%	0.35
De Baca	1,916	0.1%	2	0%	1.04	0	0%	0
Dona Ana	198,791	10.1%	94	8%	0.47	55	7%	0.28
Eddy	51,002	2.6%	70	6%	1.37	14	2%	0.27
Grant	29,699	1.5%	40	3%	1.35	19	2%	0.64
Guadalupe	4,447	0.2%	4	0%	0.9	1	0%	0.22
Harding	716	0.0%	1	0%	1.4	0	0%	0
Hidalgo	4,945	0.3%	7	1%	1.42	0	0%	0
Lea	58,043	2.9%	55	5%	0.95	25	3%	0.43
Lincoln	20,783	1.1%	23	2%	1.11	8	1%	0.38
Los Alamos	18,558	0.9%	18	1%	0.97	9	1%	0.48
Luna	26,996	1.4%	14	1%	0.52	6	1%	0.22
McKinley	70,059	3.6%	50	4%	0.71	13	2%	0.19
Mora	5,069	0.3%	0	0%	0	1	0%	0.2
Otero	63,129	3.2%	32	3%	0.51	7	1%	0.11
Quay	8,971	0.5%	7	1%	0.78	2	0%	0.22
Rio Arriba	40,827	2.1%	31	3%	0.76	11	1%	0.27
Roosevelt	19,142	1.0%	10	1%	0.52	16	2%	0.84
San Juan	117,866	6.0%	73	6%	0.62	29	4%	0.25
San Miguel	122,427	6.2%	7	1%	0.06	5	1%	0.04
Sandoval	28,655	1.5%	95	8%	3.32	67	9%	2.34
Santa Fe	142,955	7.3%	77	6%	0.54	68	9%	0.48
Sierra	12,316	0.6%	4	0%	0.32	7	1%	0.57
Socorro	18,118	0.9%	26	2%	1.44	3	0%	0.17
Taos	31,608	1.6%	16	1%	0.51	19	2%	0.6
Torrance	16,598	0.8%	13	1%	0.78	5	1%	0.3
Union	3,792	0.2%	9	1%	2.37	1	0%	0.26
Valencia	71,364	3.6%	41	3%	0.57	30	4%	0.42
<b>TOTAL</b>	<b>1,969,915</b>	<b>100%</b>	<b>1,199</b>	<b>100%</b>	<b>0.61</b>	<b>777</b>	<b>100%</b>	<b>0.39</b>

1 New Mexico Department of Health, Emergency Medical Services Bureau (September 2008). *Internal Data Run*

2 U.S. Census Bureau. (July 1, 2007.). *2007 Population Estimates*. Retrieved October 3, 2008 from [http://factfinder.census.gov/servlet/GCTTable?\\_bm=y&-geo\\_id=01000US&-\\_box\\_head\\_nbr=GCT-T1&-ds\\_name=PEP\\_2007\\_EST&-\\_lang=en&-redoLog=false&-mt\\_name=PEP\\_2007\\_EST\\_GCTT1\\_ST2&-format=US-9&-\\_sse=on](http://factfinder.census.gov/servlet/GCTTable?_bm=y&-geo_id=01000US&-_box_head_nbr=GCT-T1&-ds_name=PEP_2007_EST&-_lang=en&-redoLog=false&-mt_name=PEP_2007_EST_GCTT1_ST2&-format=US-9&-_sse=on)

## Map 14. Distribution of New Mexico Certified Emergency Medical Technicians, EMS-First Responders and Paramedics by County<sup>1</sup>



\*Number represents certified EMS personnel in each county. Certified EMS personnel may not currently be practicing, or may be practicing in another county.

<sup>1</sup> New Mexico Department of Health, Emergency Medical Services Bureau (September 2008). *Internal Data Run*

New Mexico Health Policy Commission  
2055 South Pacheco Street, Suite 200  
Santa Fe, New Mexico 87505  
Phone: (505) 827-6201  
Fax: (505) 424-3222  
[www.hpc.state.nm.us](http://www.hpc.state.nm.us)